



Standing Out by Fitting in: A Contemporary Approach to Masonry Traditions

MA

Erica Garfinkel, RA, LEED AP BD+C

Senior Project Architect



12+ Years of Experience

5+ Years with MA

Registered Architect

LEED Accredited Professional

Table of Contents

Intro to MA

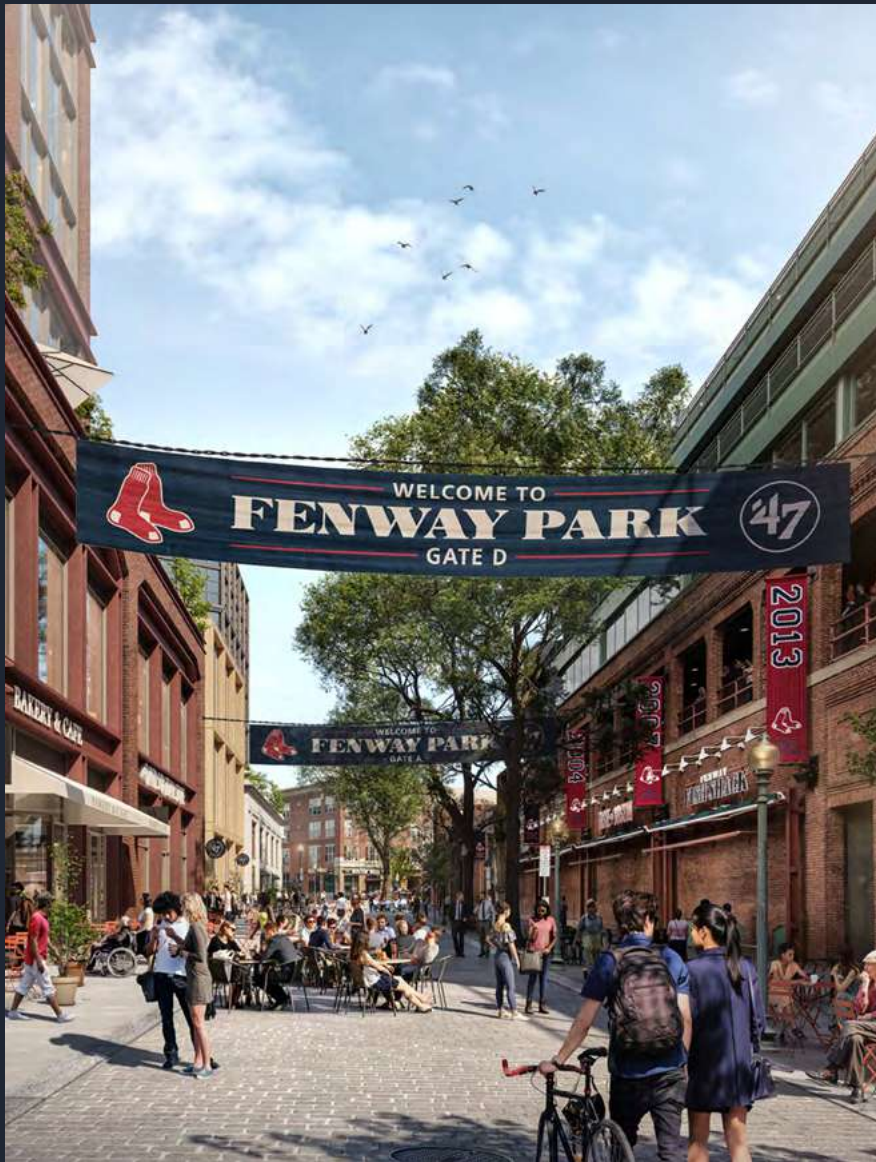
Design Ethos

Case Studies

Intro to *MA*

Who we are

MA is a multidisciplinary design practice that provides a comprehensive approach to planning, architecture, interior design, and art services—driven by our collective passion for placemaking.



Planning / Placemaking



Architecture



Interior Design



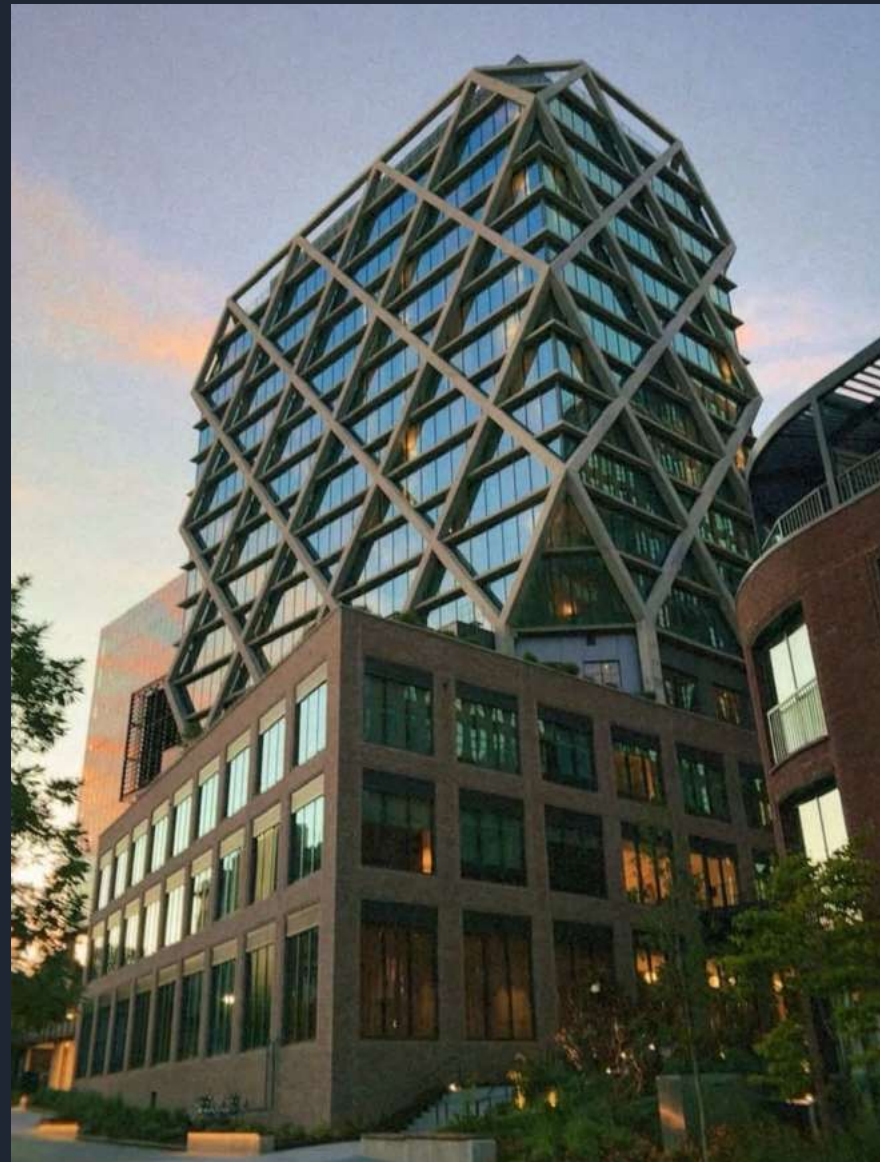
Art

What we do

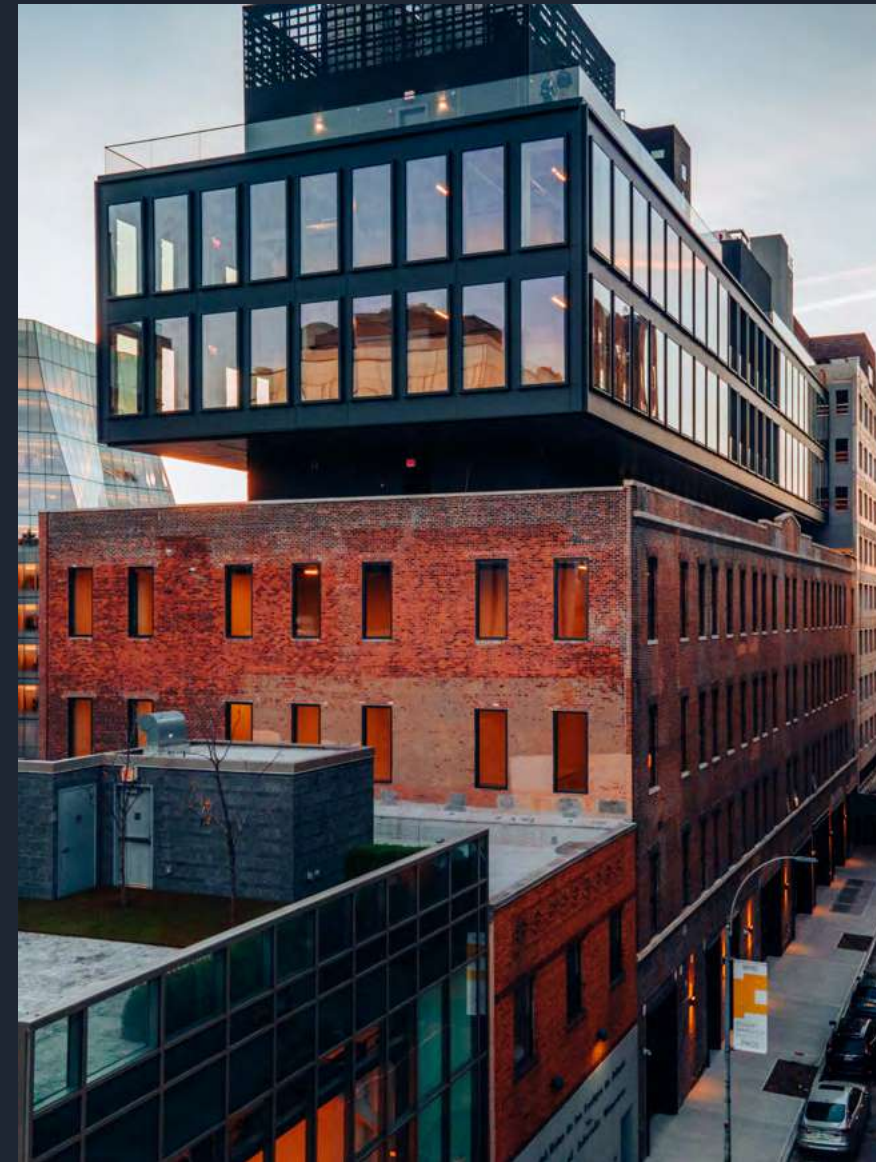
We create iconic buildings that stand out by fitting in—contemporary architecture, interiors, and environments inspired by art, history, and context using sustainable technologies and innovative materials.



Residential



Hospitality



Creative Office



Institutional / University

Why we do it

We are driven to create buildings that are as relevant today as they will be 100 years from now; buildings worth preserving.



83 Walker — New York, NY



The Row Fulton Market — Chicago, IL



529 King Street — Charleston, SC

The Four Pillars of MA's Conversation-Driven Design Ethos

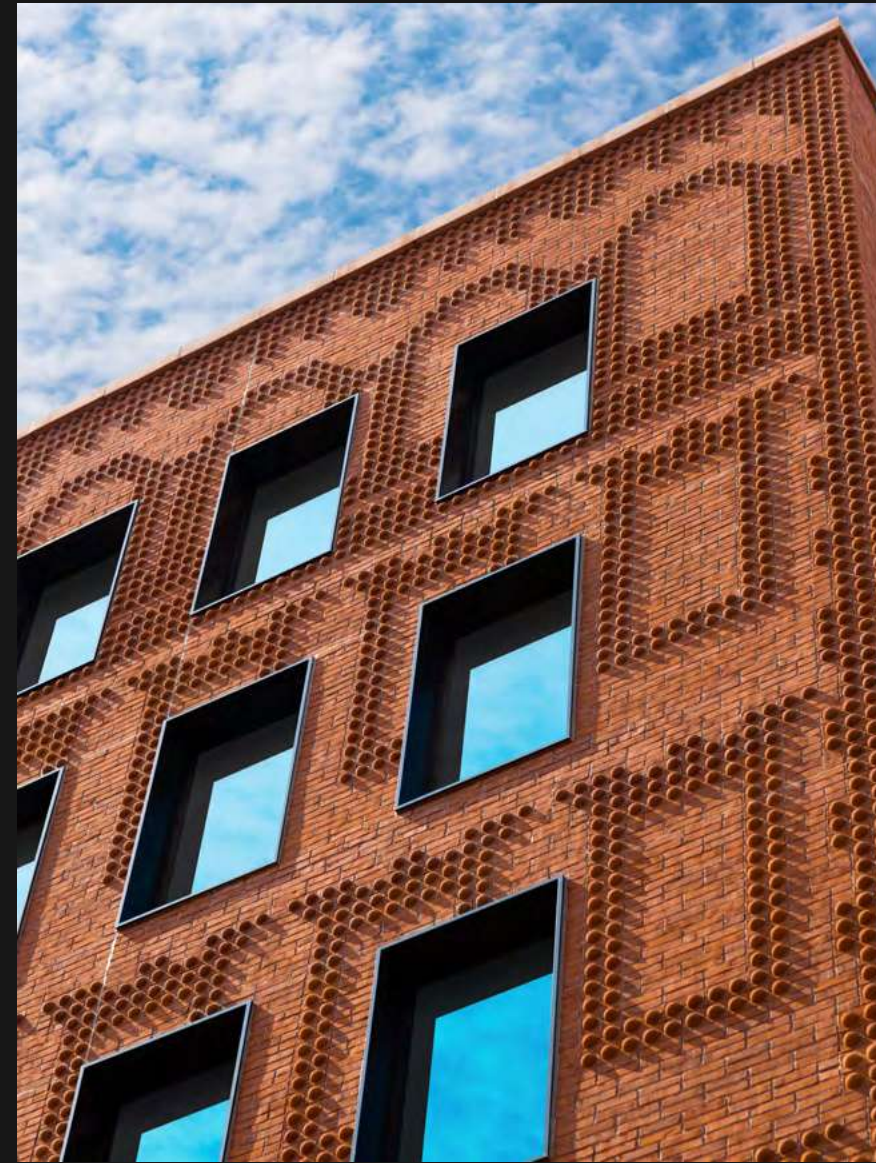
1. Contextual Sensitivity



2. Balanced Composition



3. Tradition : Innovation



4. Creative Influence



Case Studies



The Grand Mulberry; New York, NY



UC Berkeley Anchor House; Berkeley, CA

The Grand Mulberry

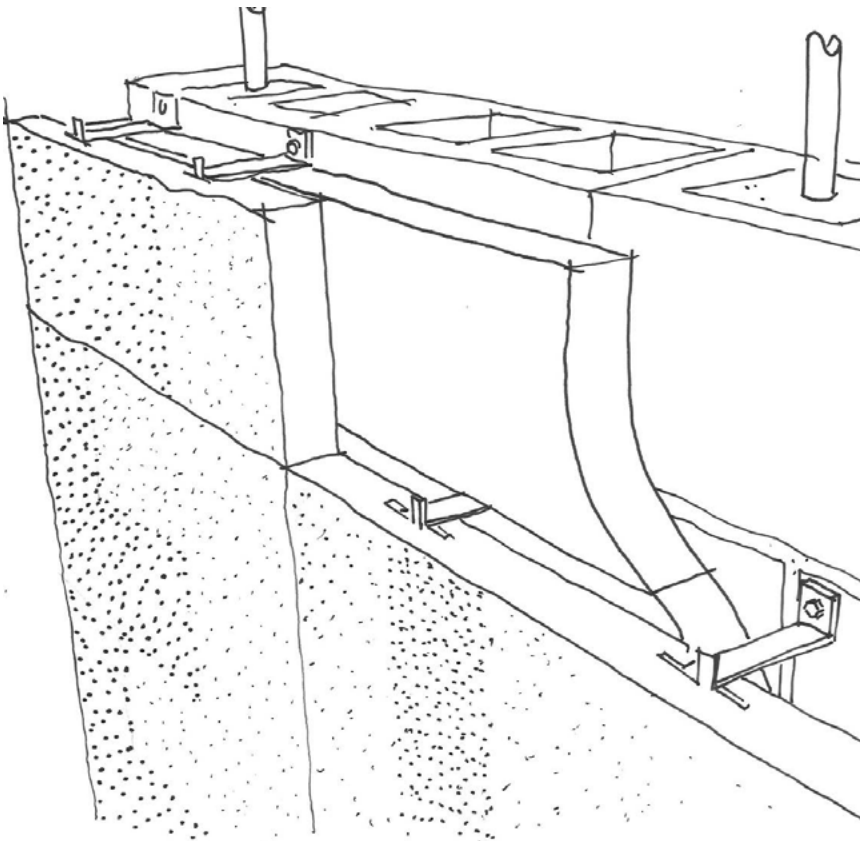
35,765 gsf
7 stories
20 units
New York, NY
2022

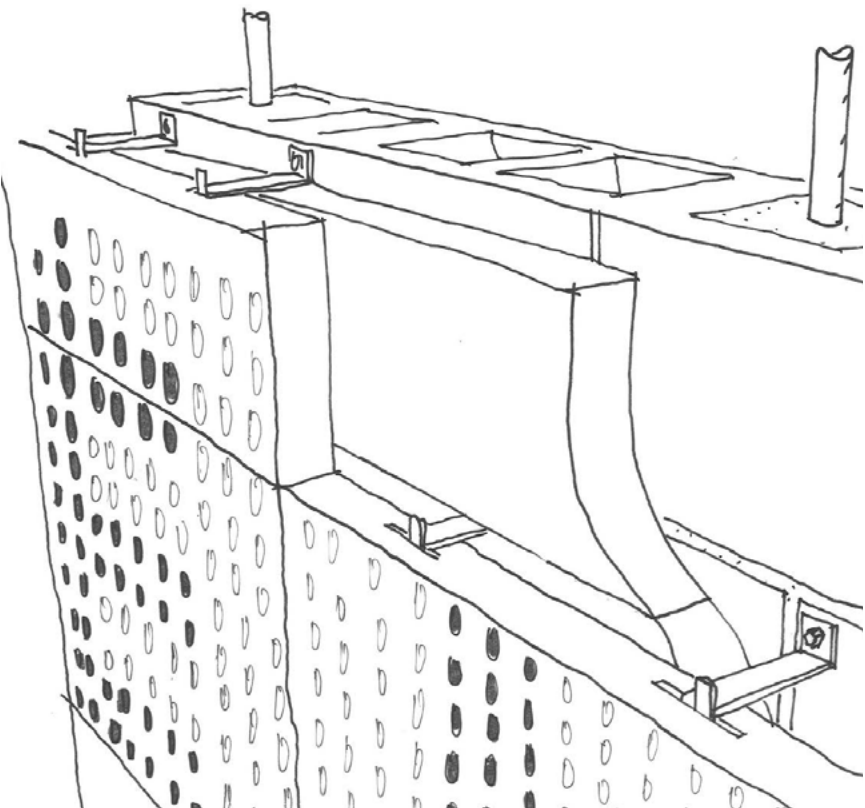
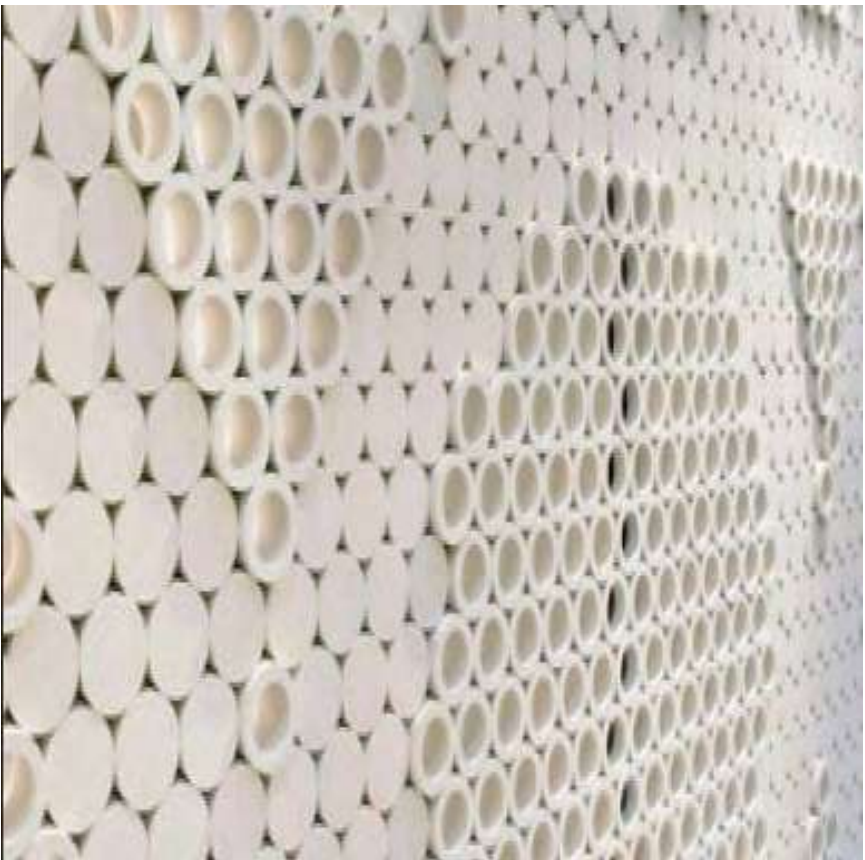
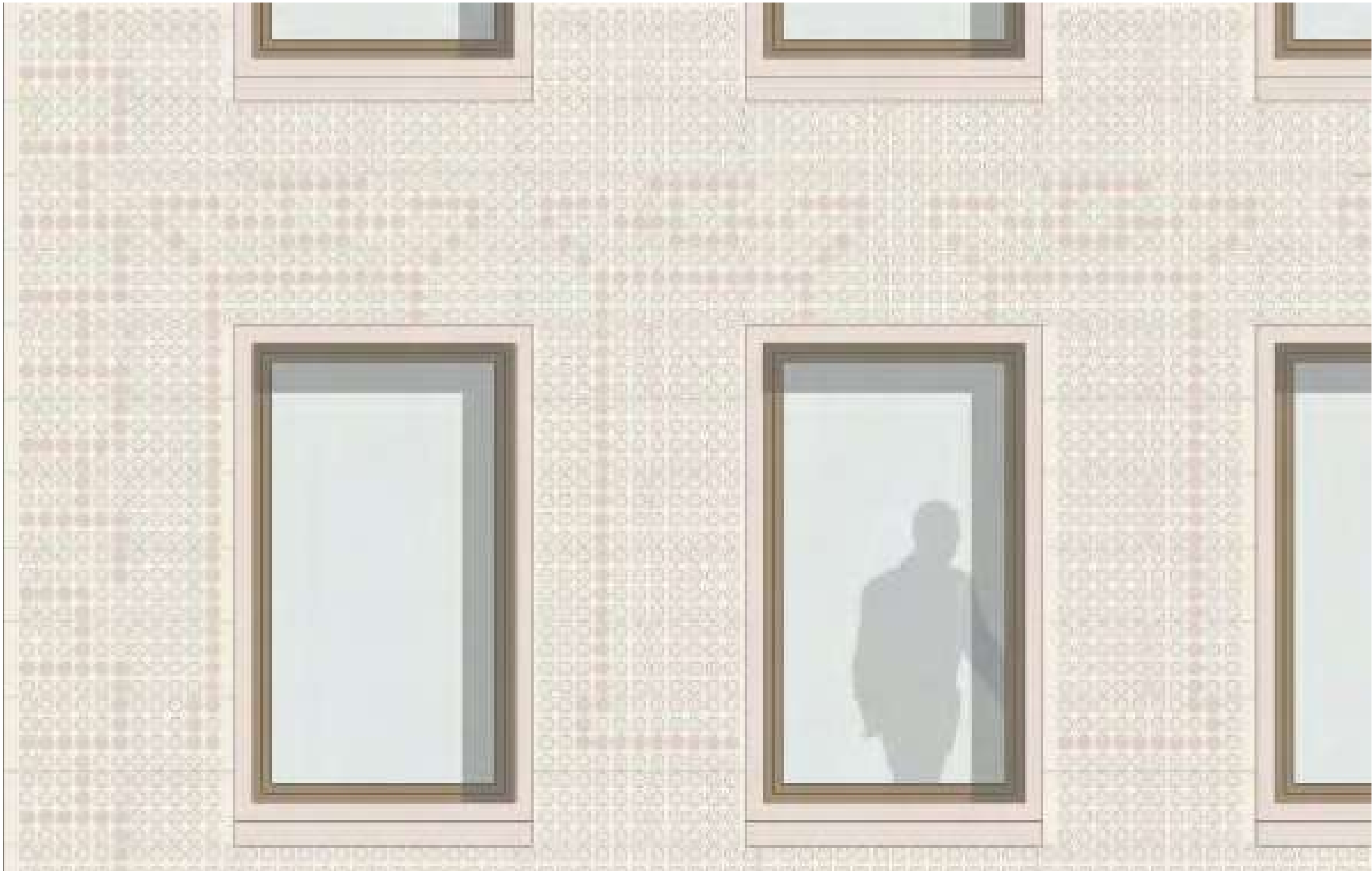
Located at the intersection of Grand and Mulberry Streets in the heart of Little Italy, the design of The Grand Mulberry draws inspiration from the rich heritage of historic Italianate tenements found throughout the neighborhood. The custom-profiled brick that clads the contemporary condominium building creates a spectral reference to this heritage.

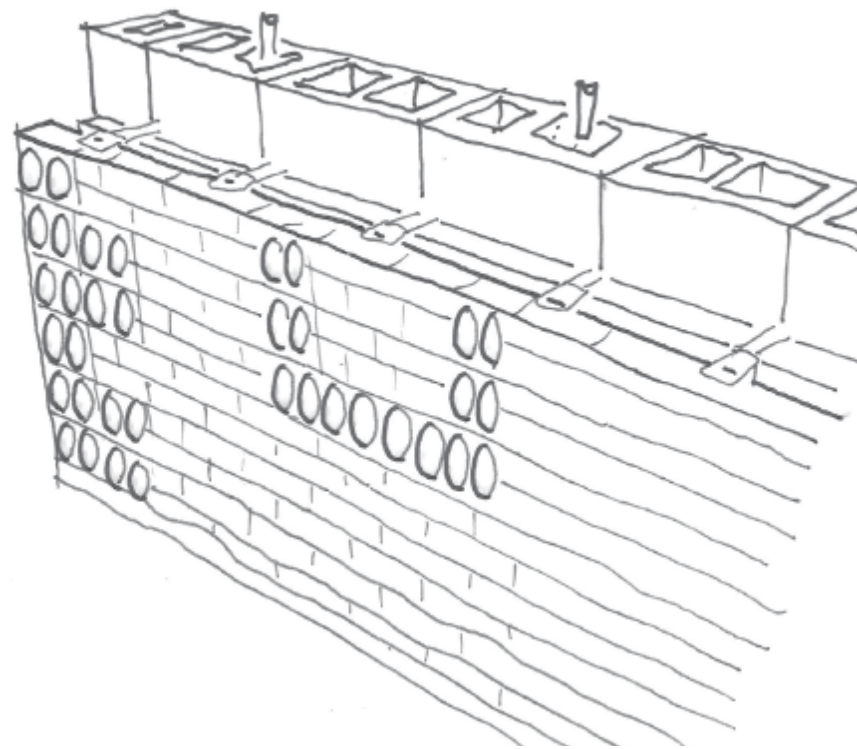
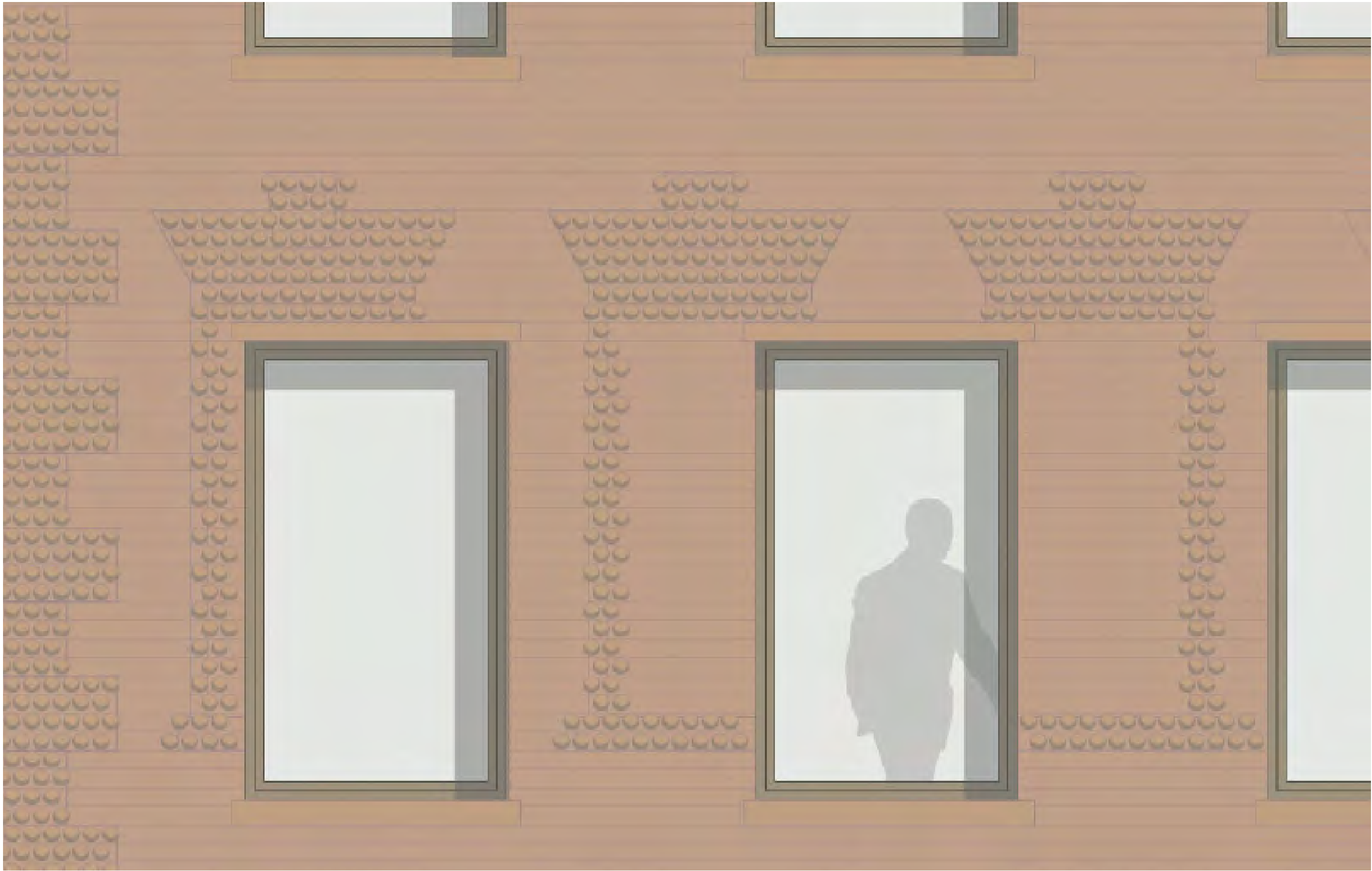




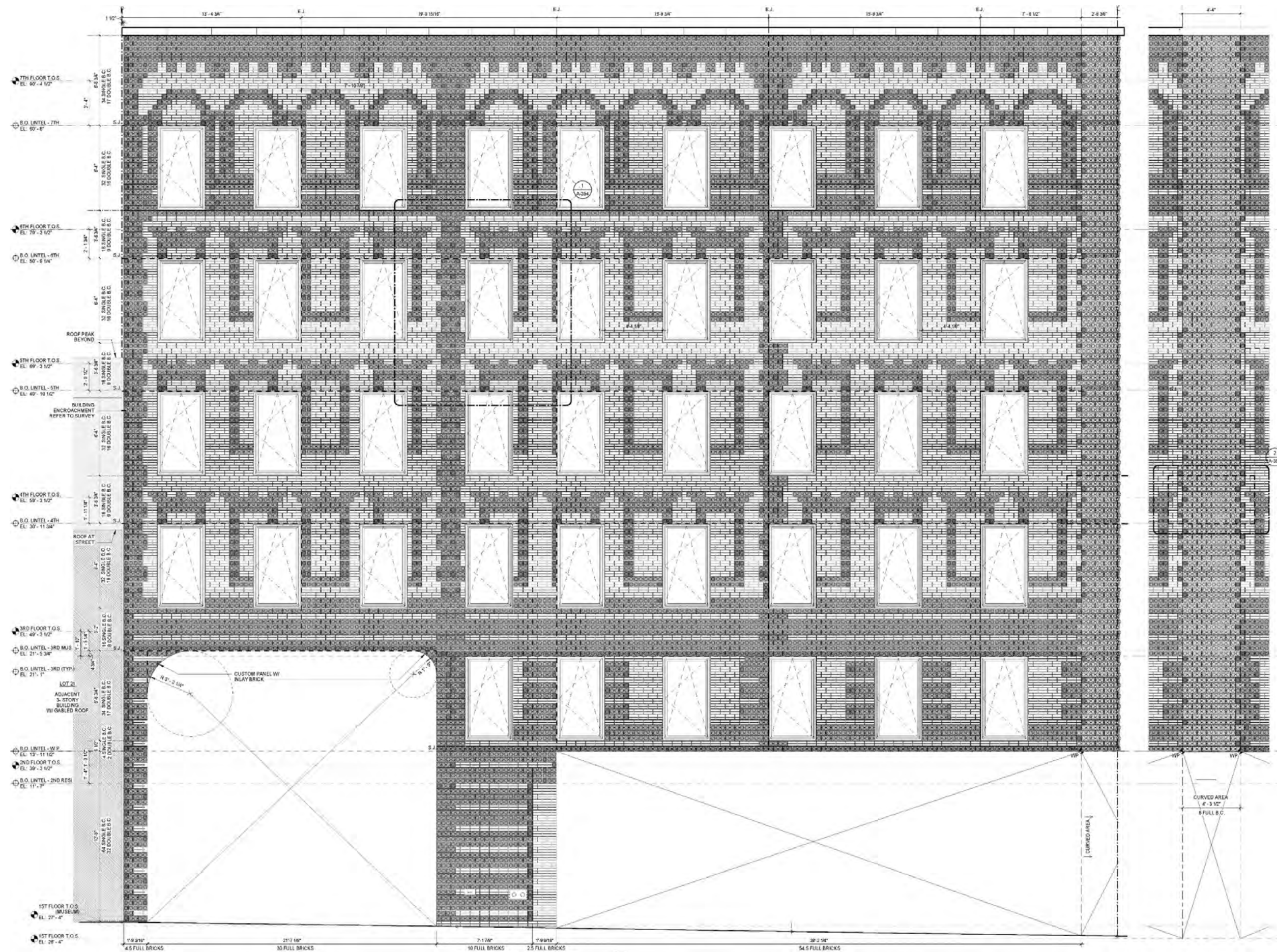


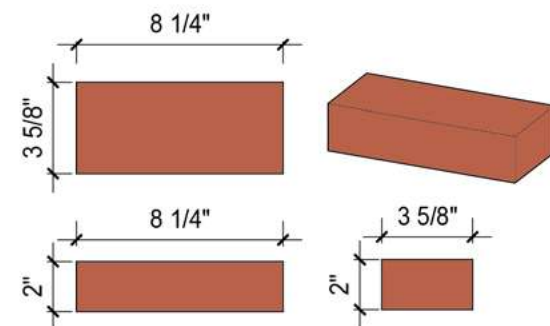




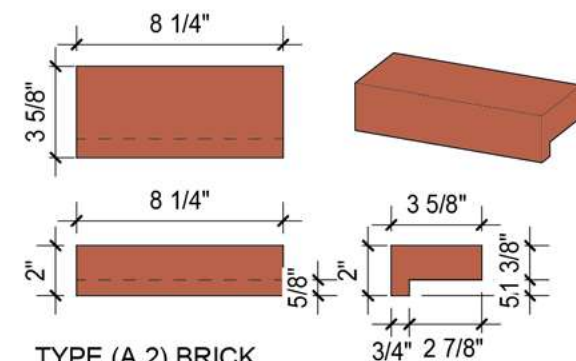




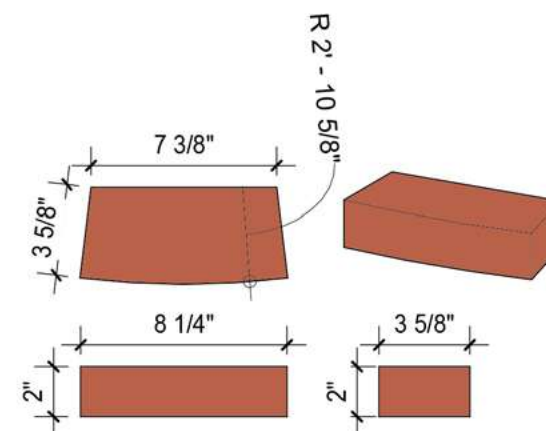




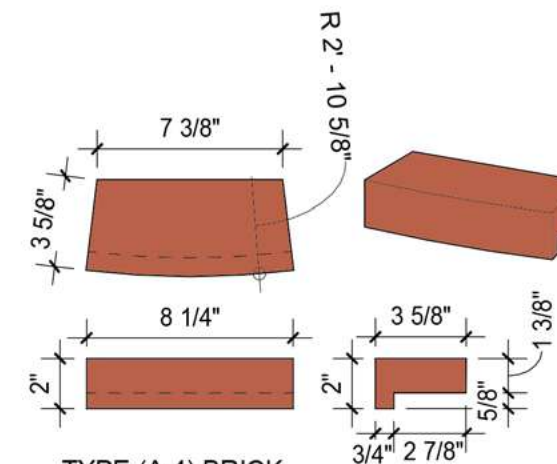
TYPE (A.1) BRICK
FLAT FACE
XBR02



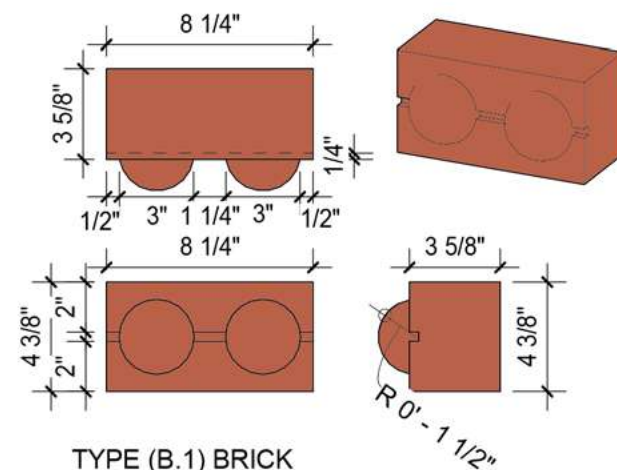
TYPE (A.2) BRICK
FLAT FACE - LIPPED
XBR02



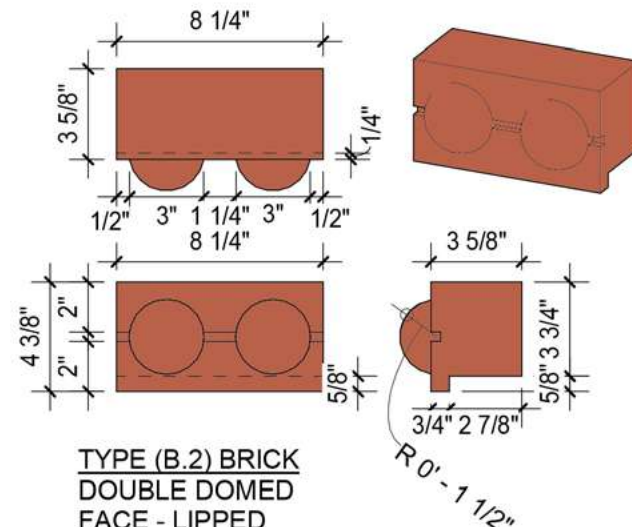
TYPE (A.3) BRICK
CURVED FACE
XBR04



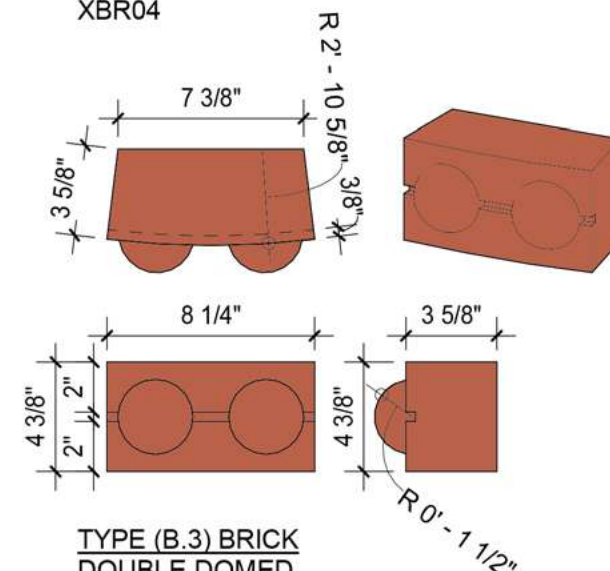
TYPE (A.4) BRICK
CURVED FACE - LIPPED
XBR02



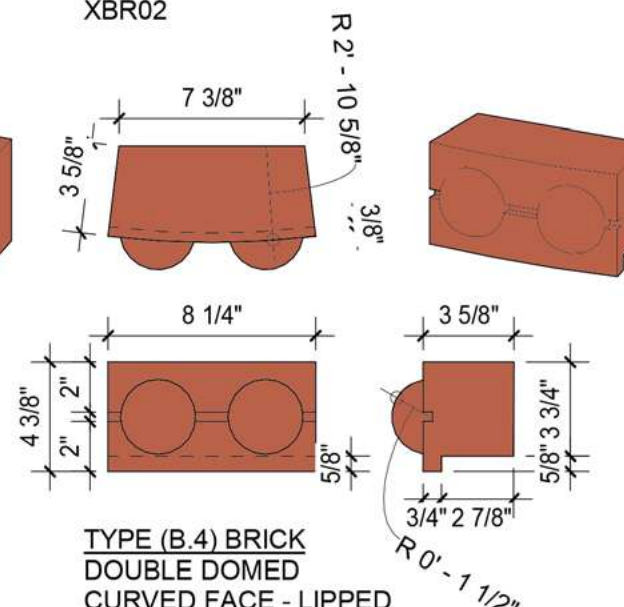
TYPE (B.1) BRICK
DOUBLE DOMED
FACE
XBR01



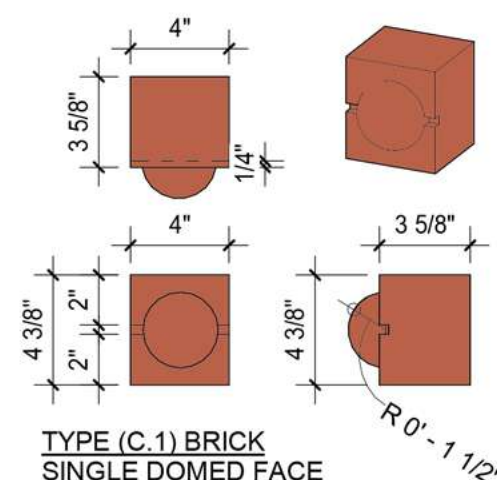
TYPE (B.2) BRICK
DOUBLE DOMED
FACE - LIPPED
XBR01



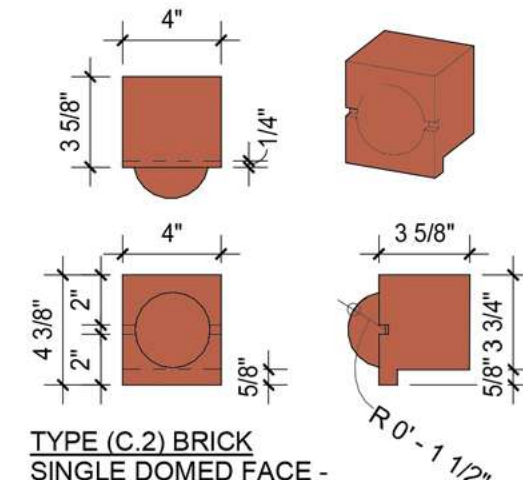
TYPE (B.3) BRICK
DOUBLE DOMED
CURVED FACE
XBR03



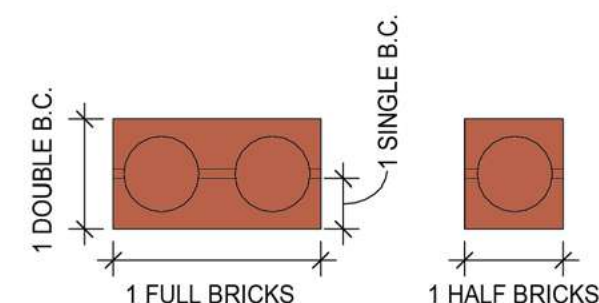
TYPE (B.4) BRICK
DOUBLE DOMED
CURVED FACE - LIPPED
XBR03



TYPE (C.1) BRICK
SINGLE DOMED FACE
XBR01



TYPE (C.2) BRICK
SINGLE DOMED FACE -
LIPPED
XBR01

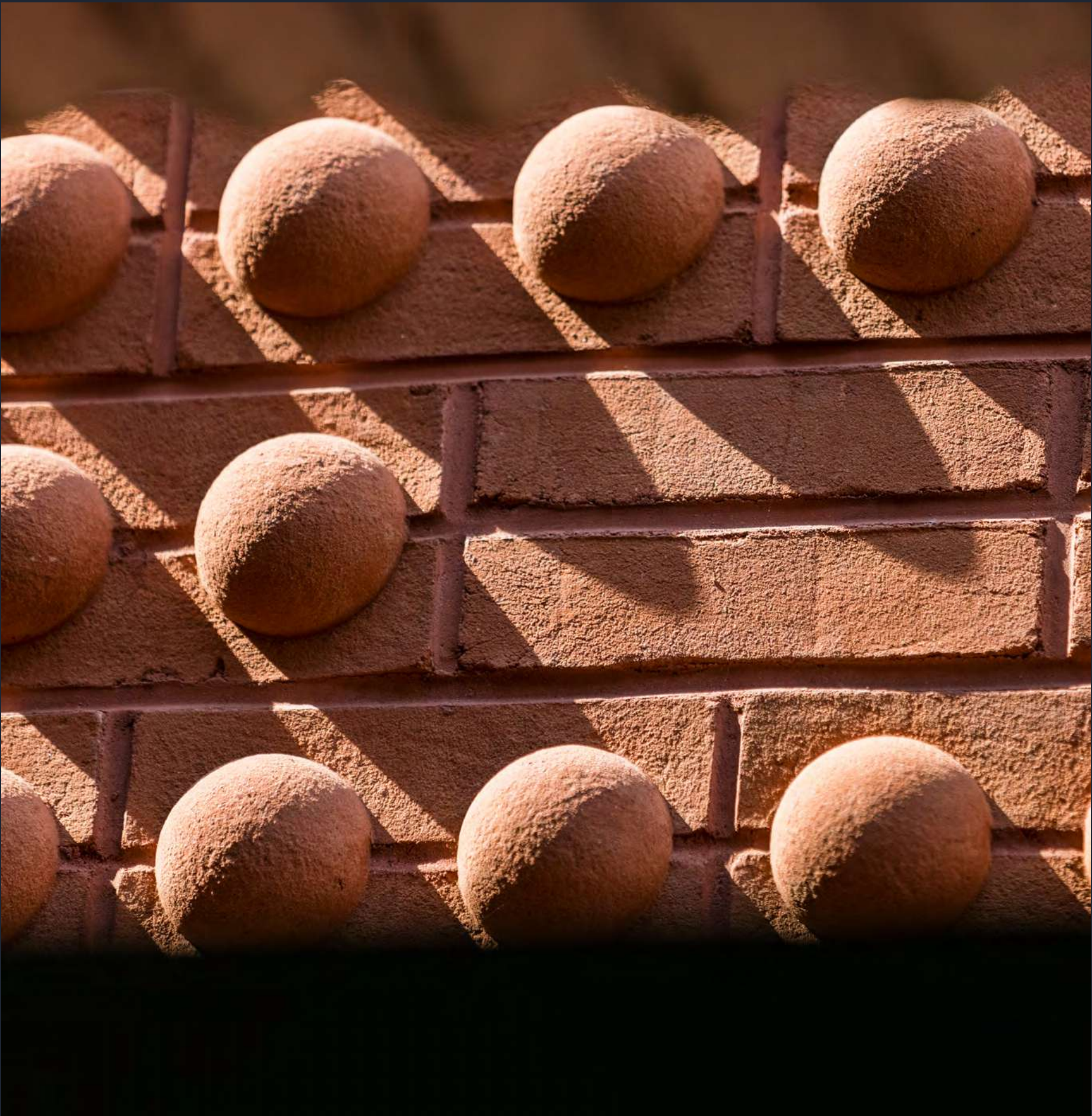


COURSING DIAGRAM

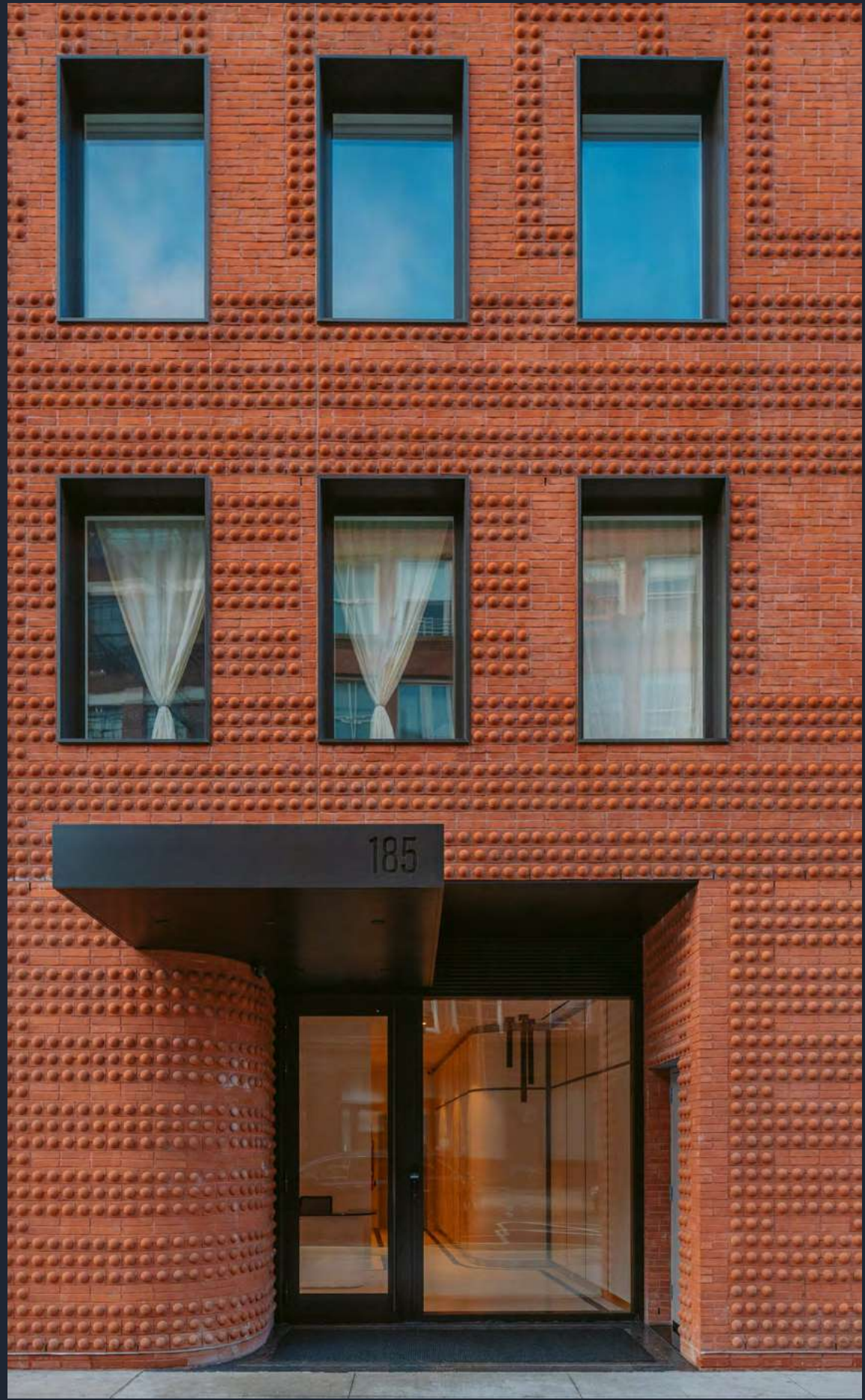
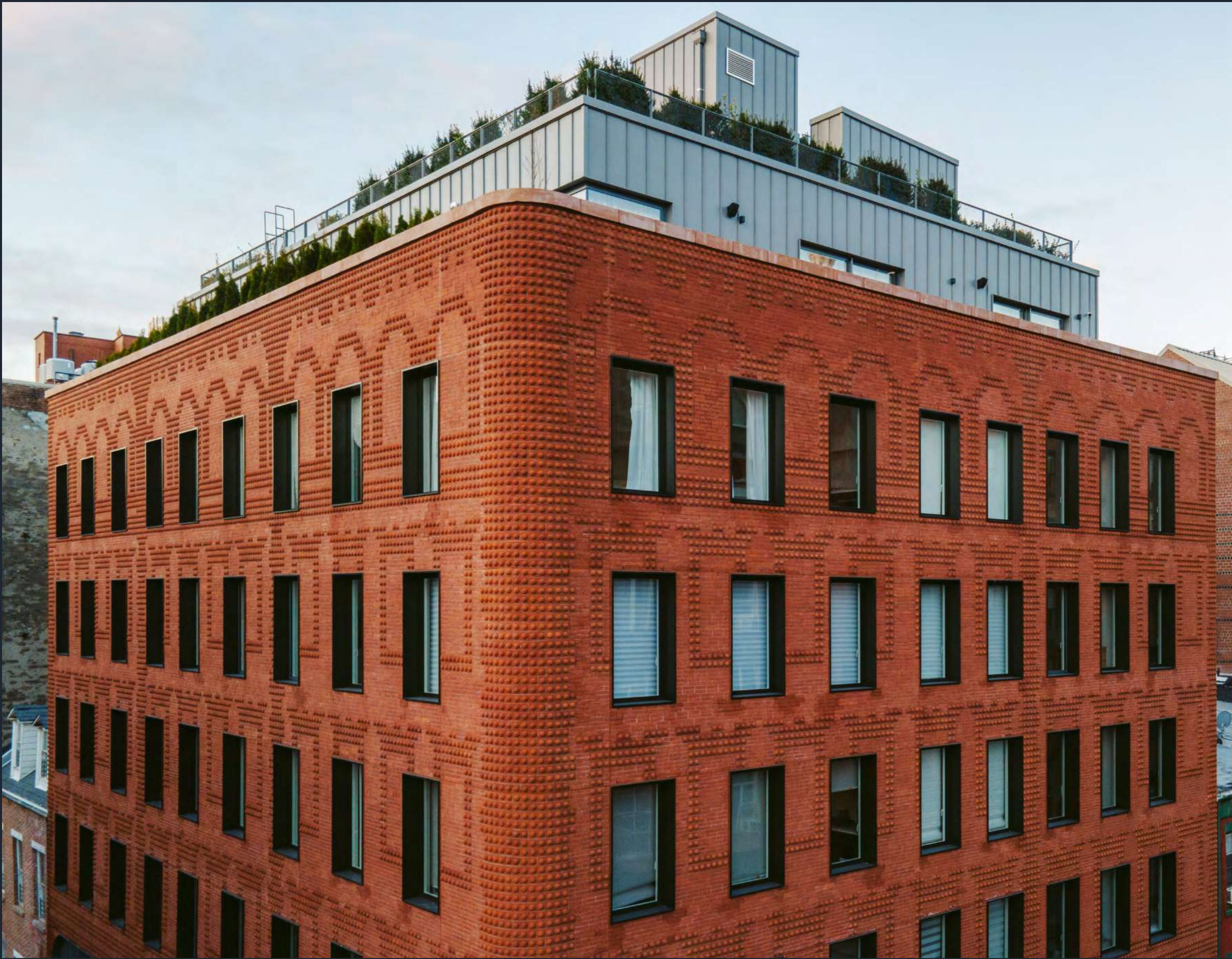


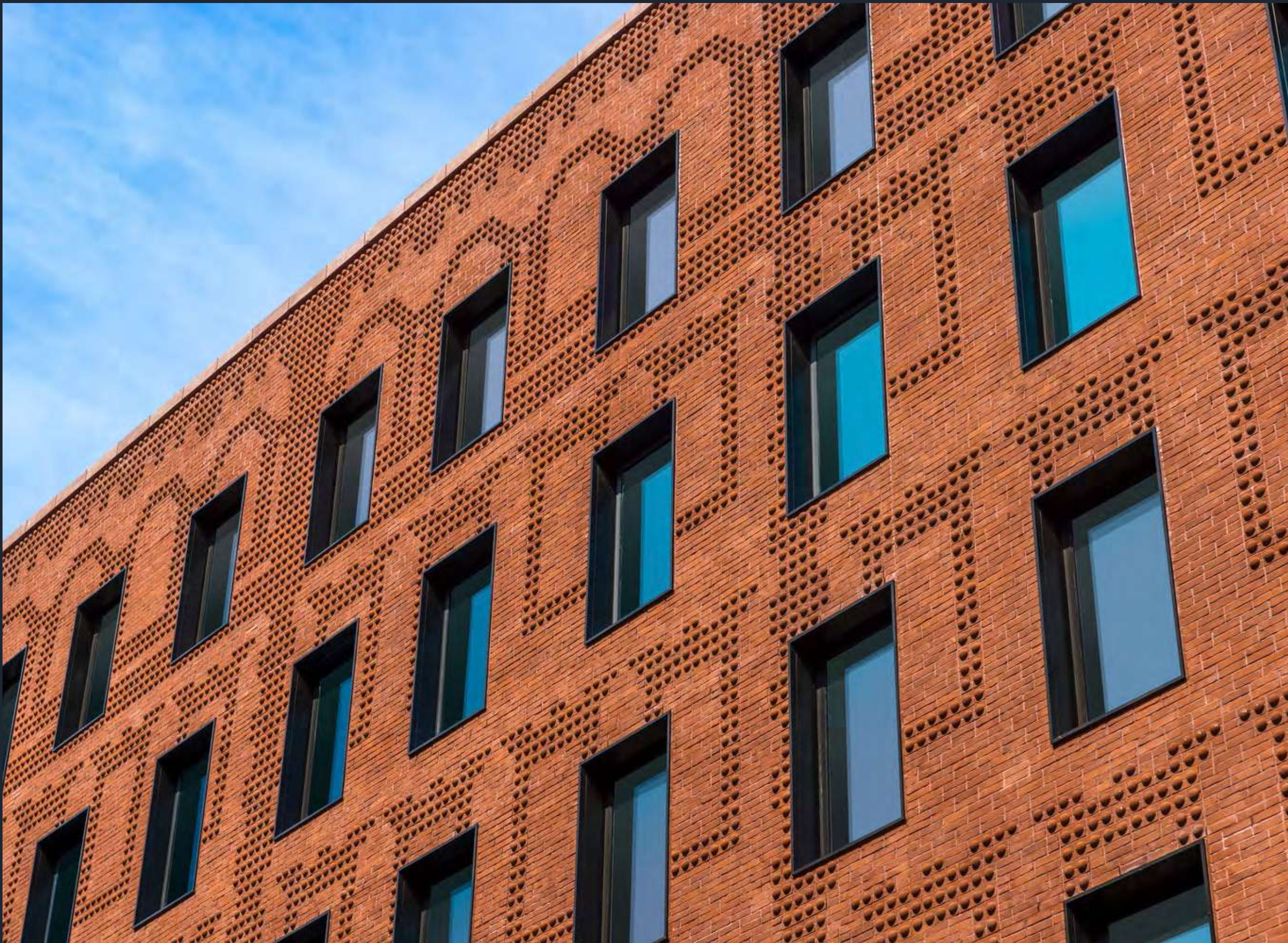


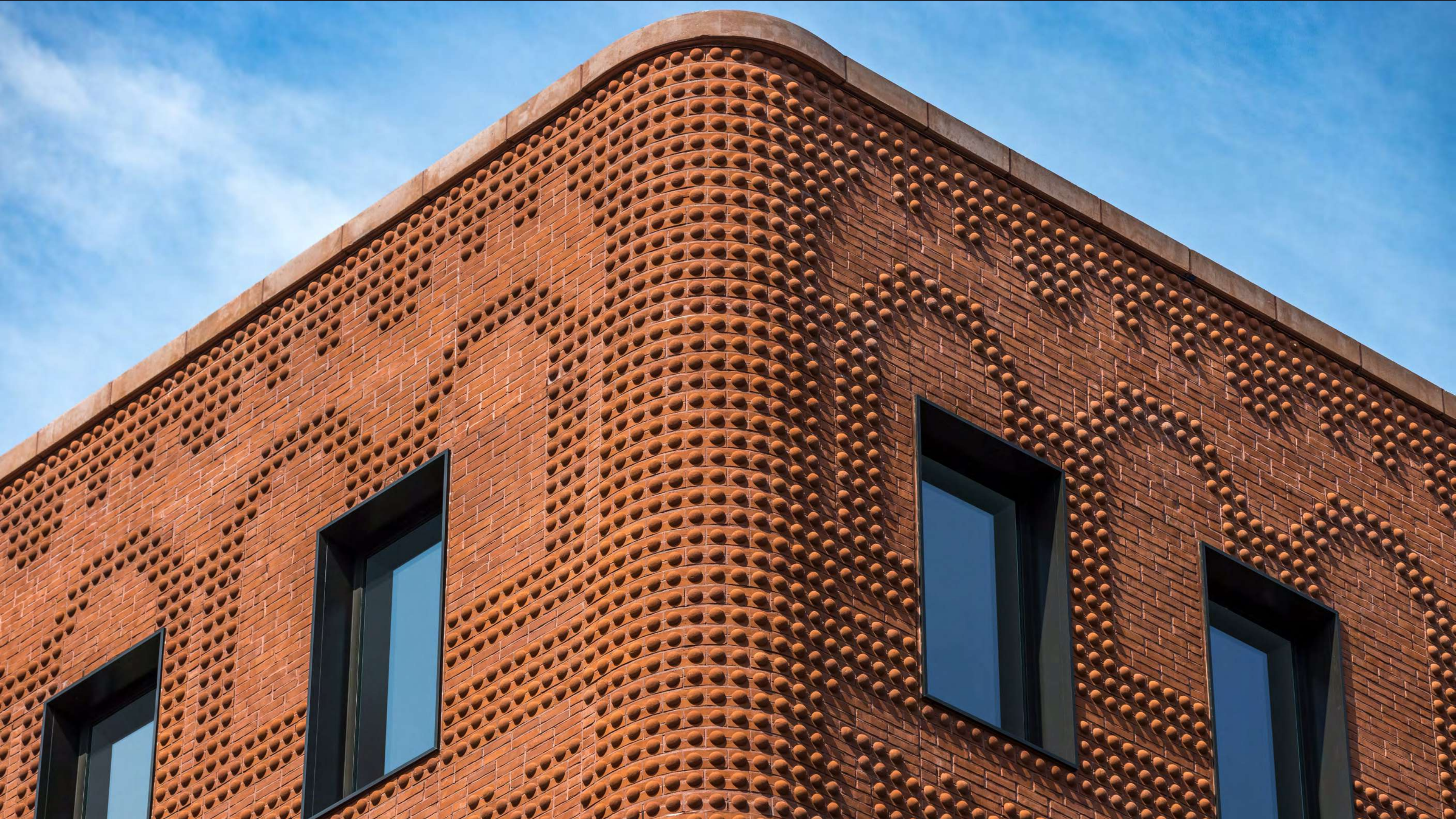












UC Berkeley Anchor House

450,000 sf

14 stories

245 dorms / 728 beds

Berkeley, CA

2024

Anchor House is a transformative dormitory project that sets a new standard for student residential living. Located just one block from UC Berkeley's campus and three blocks from the Berkeley BART station, the mixed-use dormitory is intentionally designed and programmed to help the University's transfer students thrive academically, socially, and culturally.

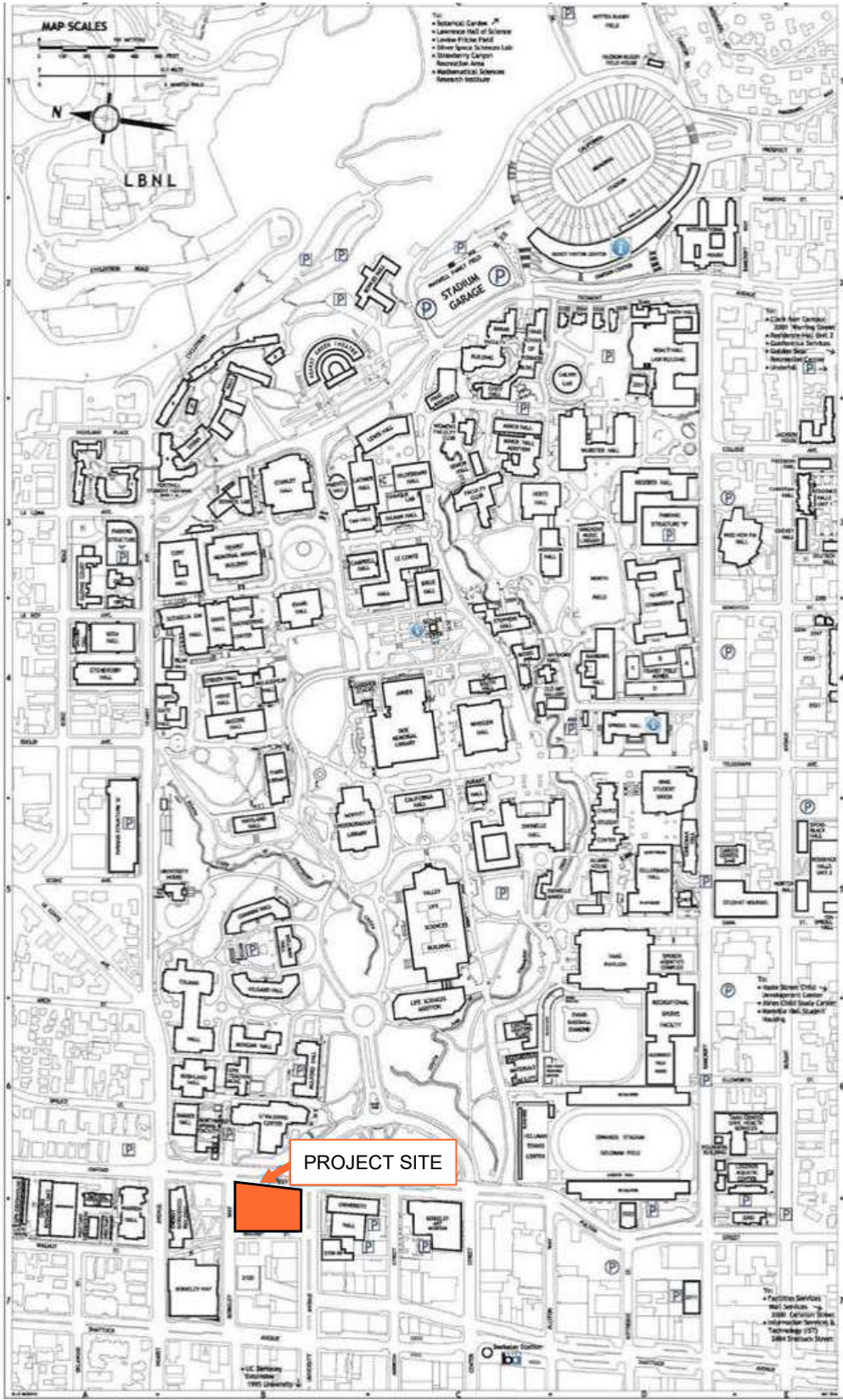
Sustainability Certifications

LEED GOLD

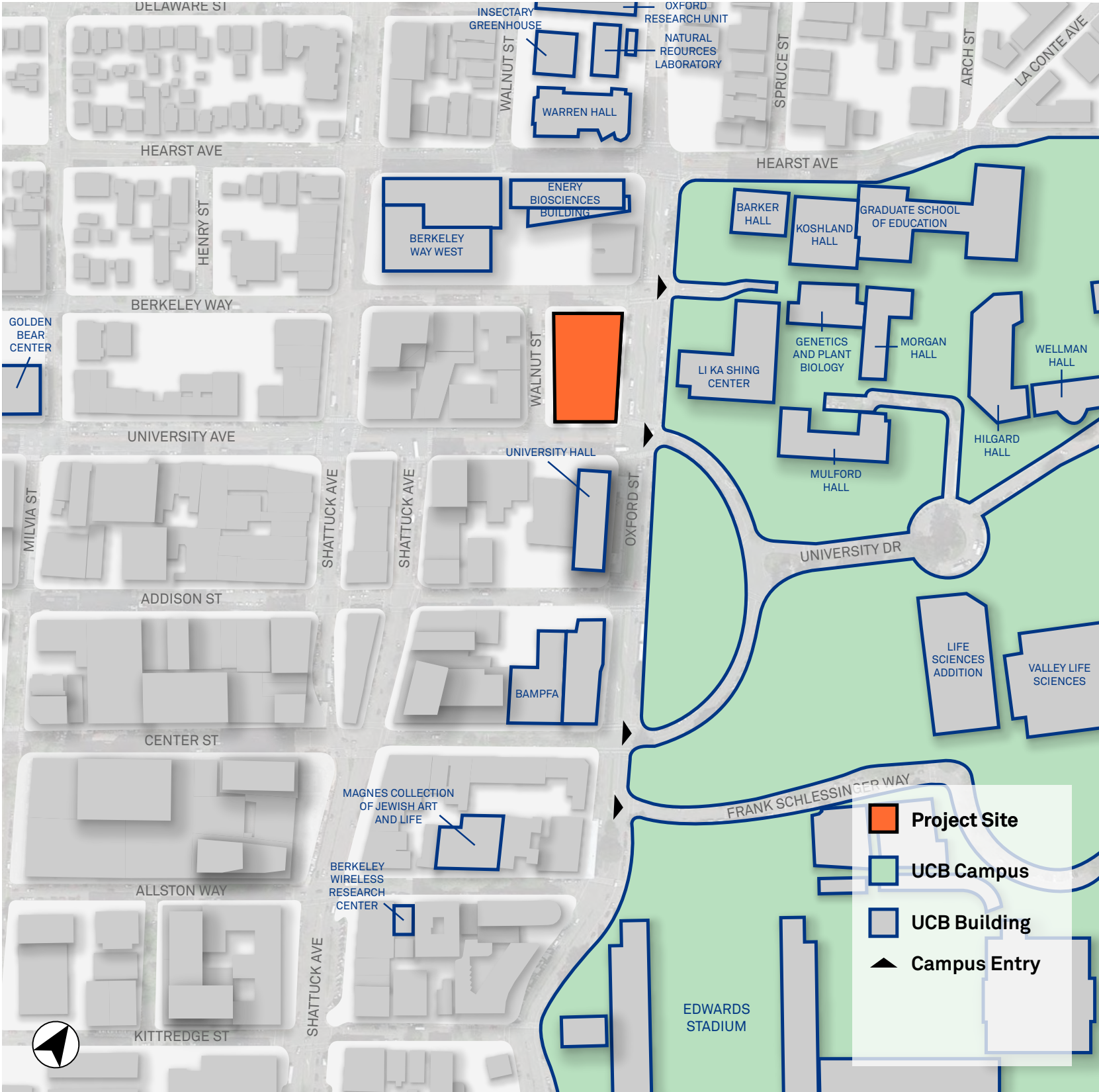
Carbon Neutrality (Scopes 1 & 2)



Context



Project Location Map



Project Vicinity Map



L13 Terraces:
Hand Laid Brick

L4 - L12:
Panelized Thin Brick

L1 - L3 (incl. Courtyard):
Hand Laid Brick &
Reclaimed Brick Arch

Hand Laid Brick



Facade



Courtyard

Street Facades: Design Process



Oxford Street (East Elevation)



University Ave (South Elevation)



Street Facades: Design Process

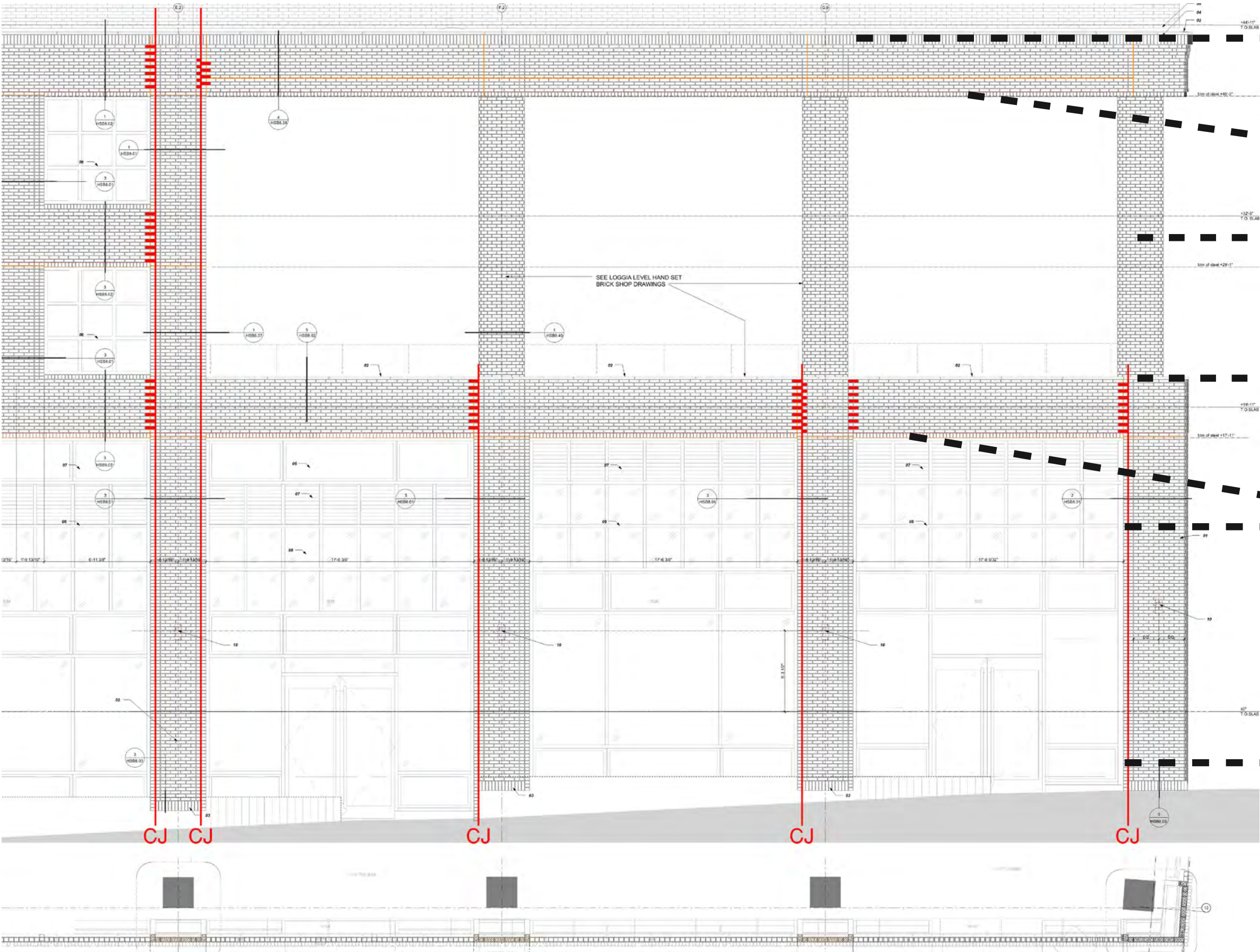


Metal Expression



Inset Brick

Street Facades: Brick Coursing, Control Joints, & Shop Drawings



Soldier

Rowlock

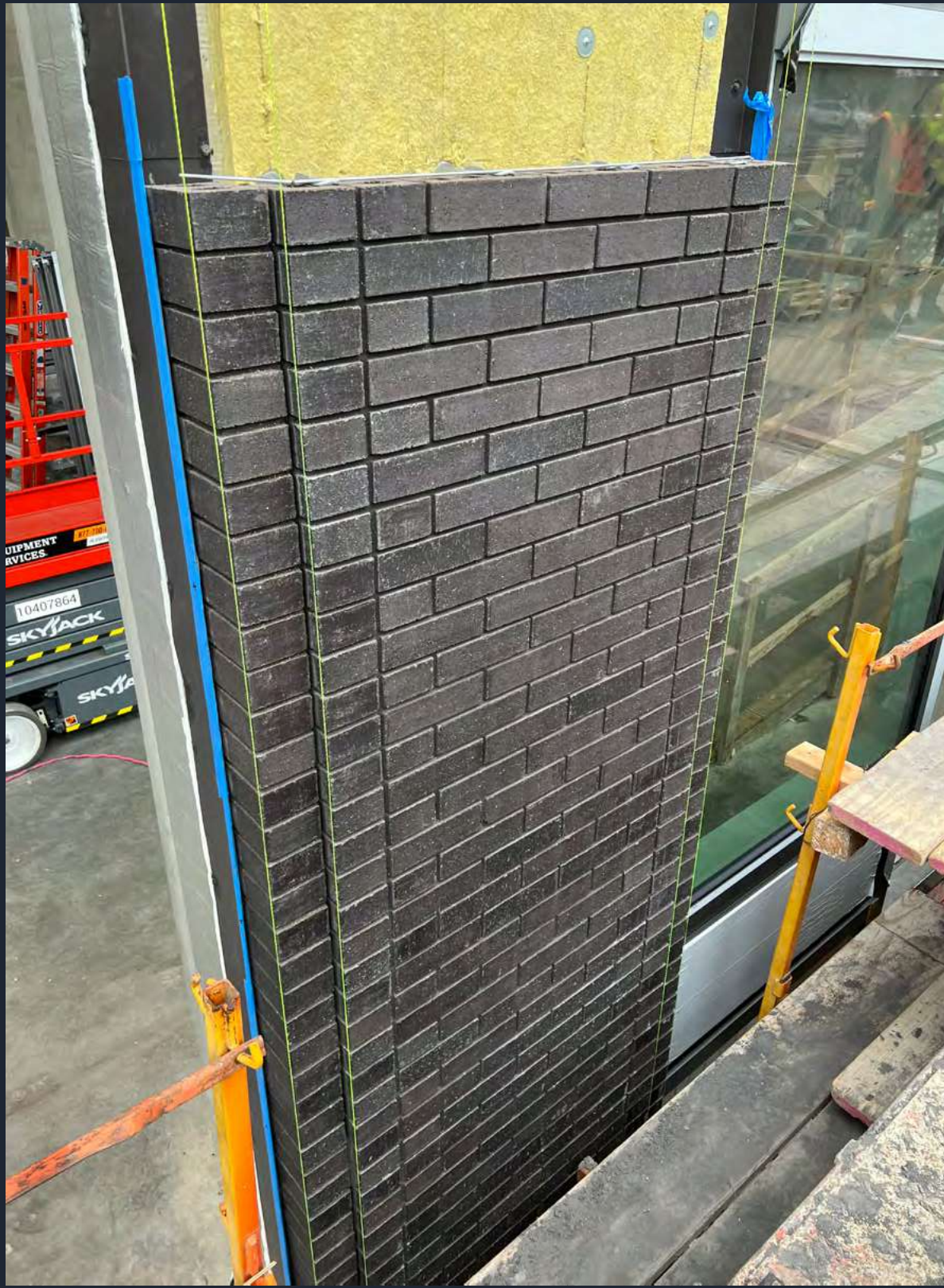
Radiused Brick

Precast Coping

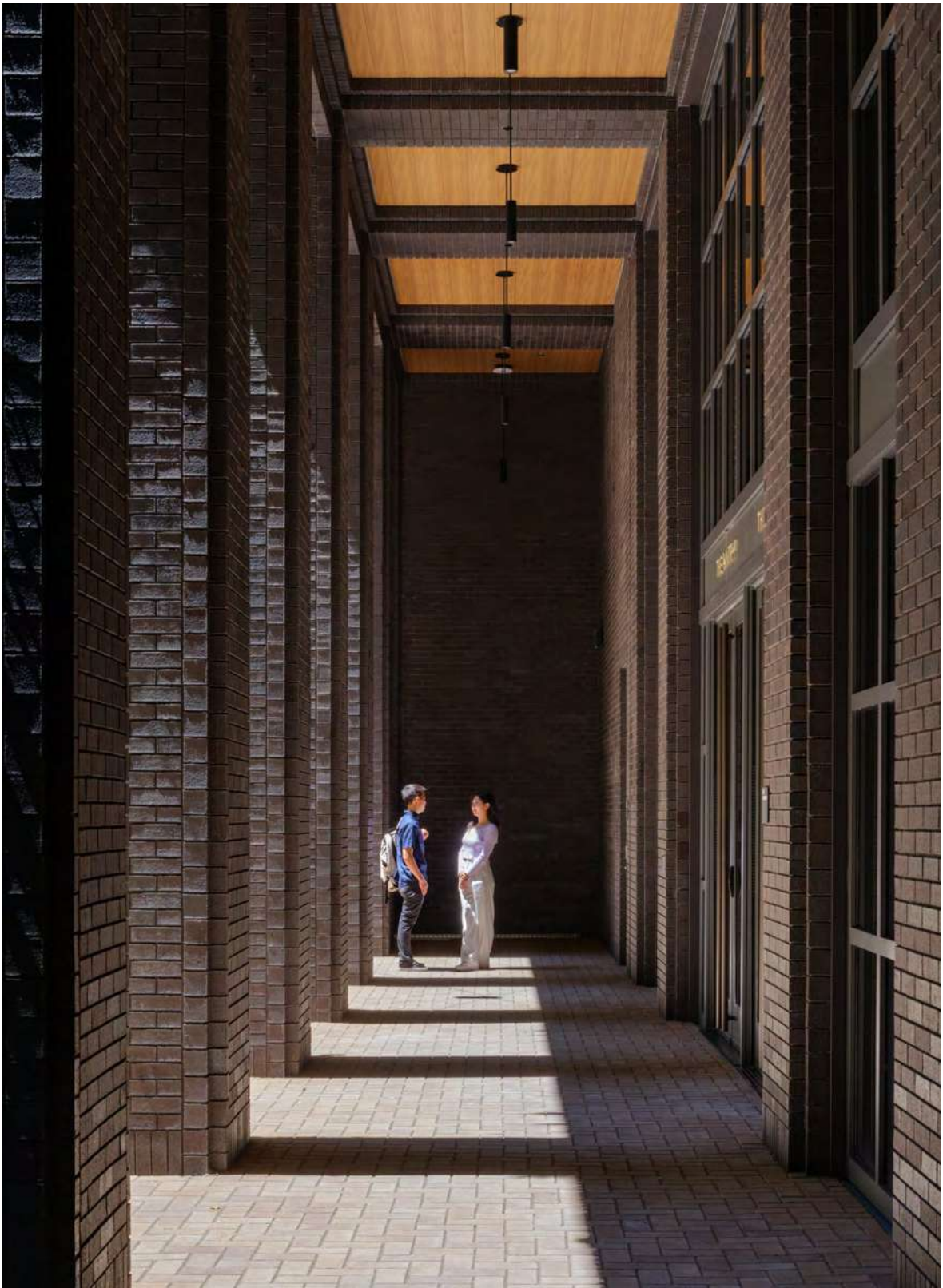
Rowlock & Header at Openings

Header Course at Piers & Control Joints

Street Facades: Construction Images



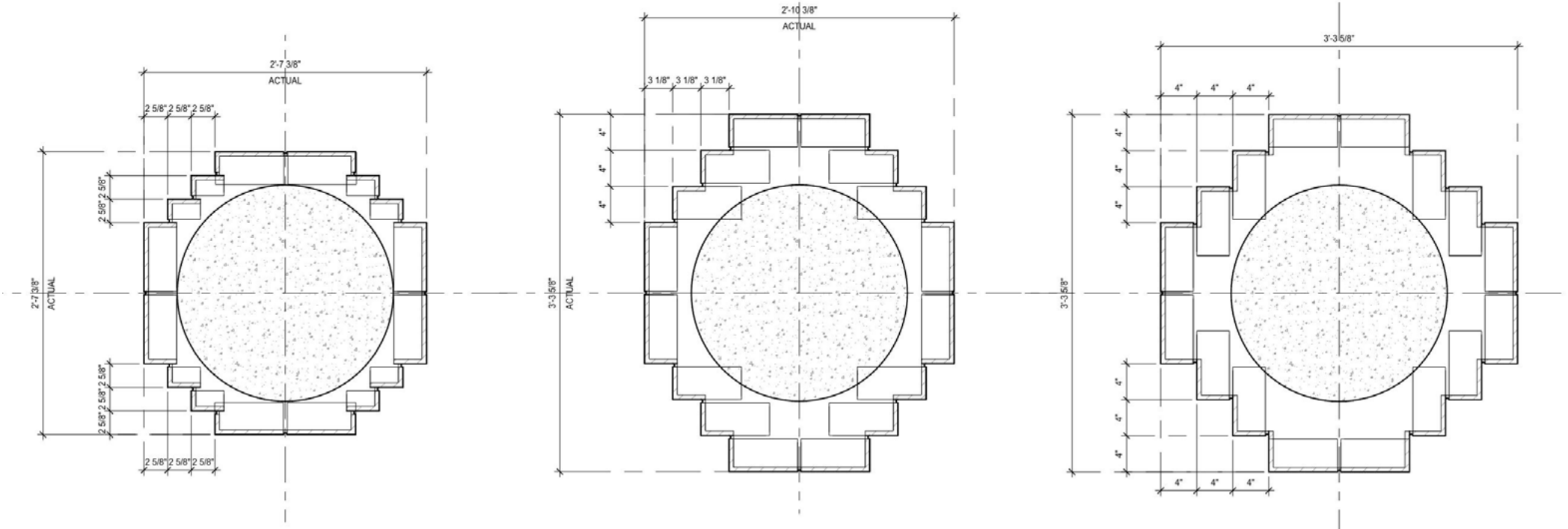
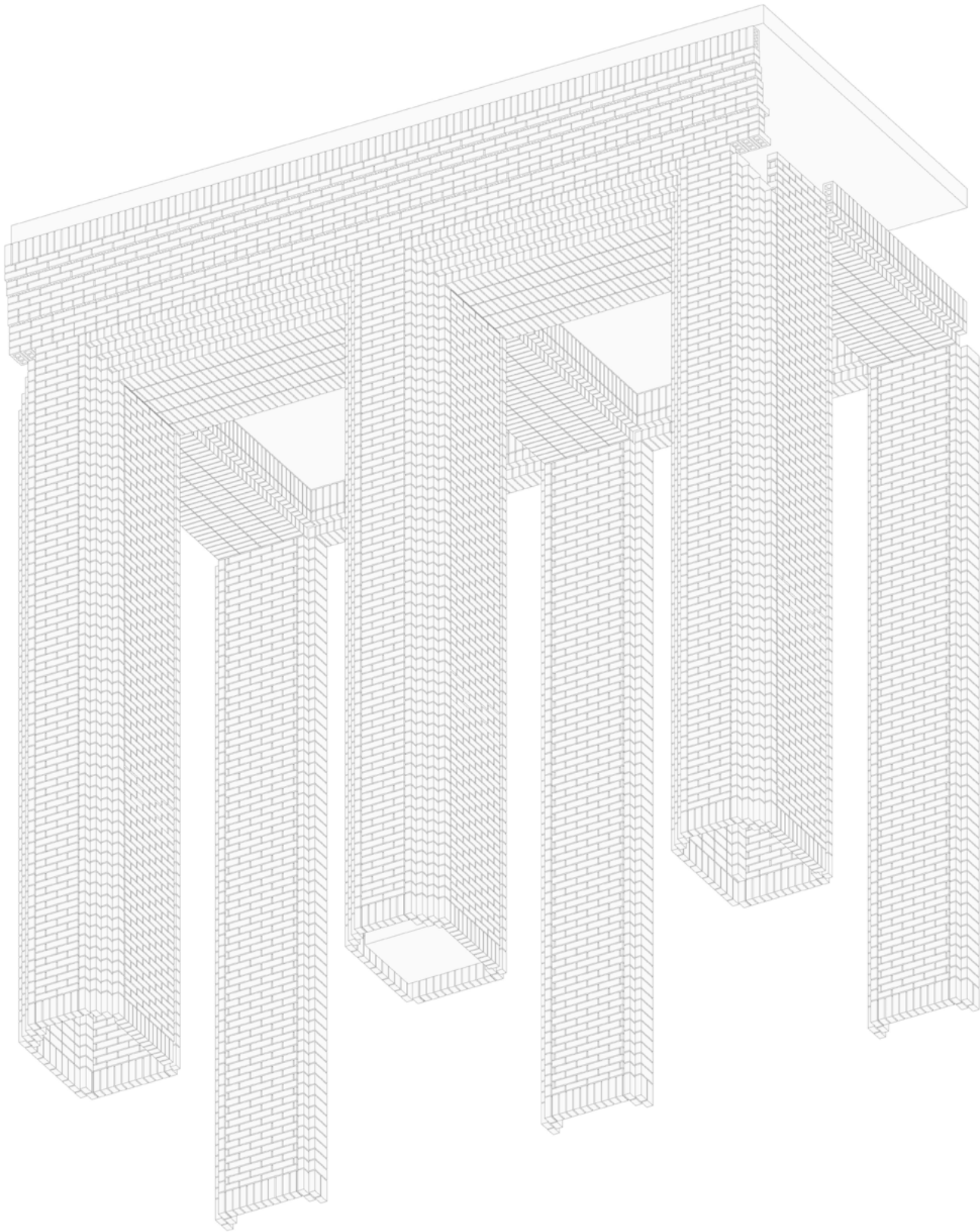
Courtyard Conditions



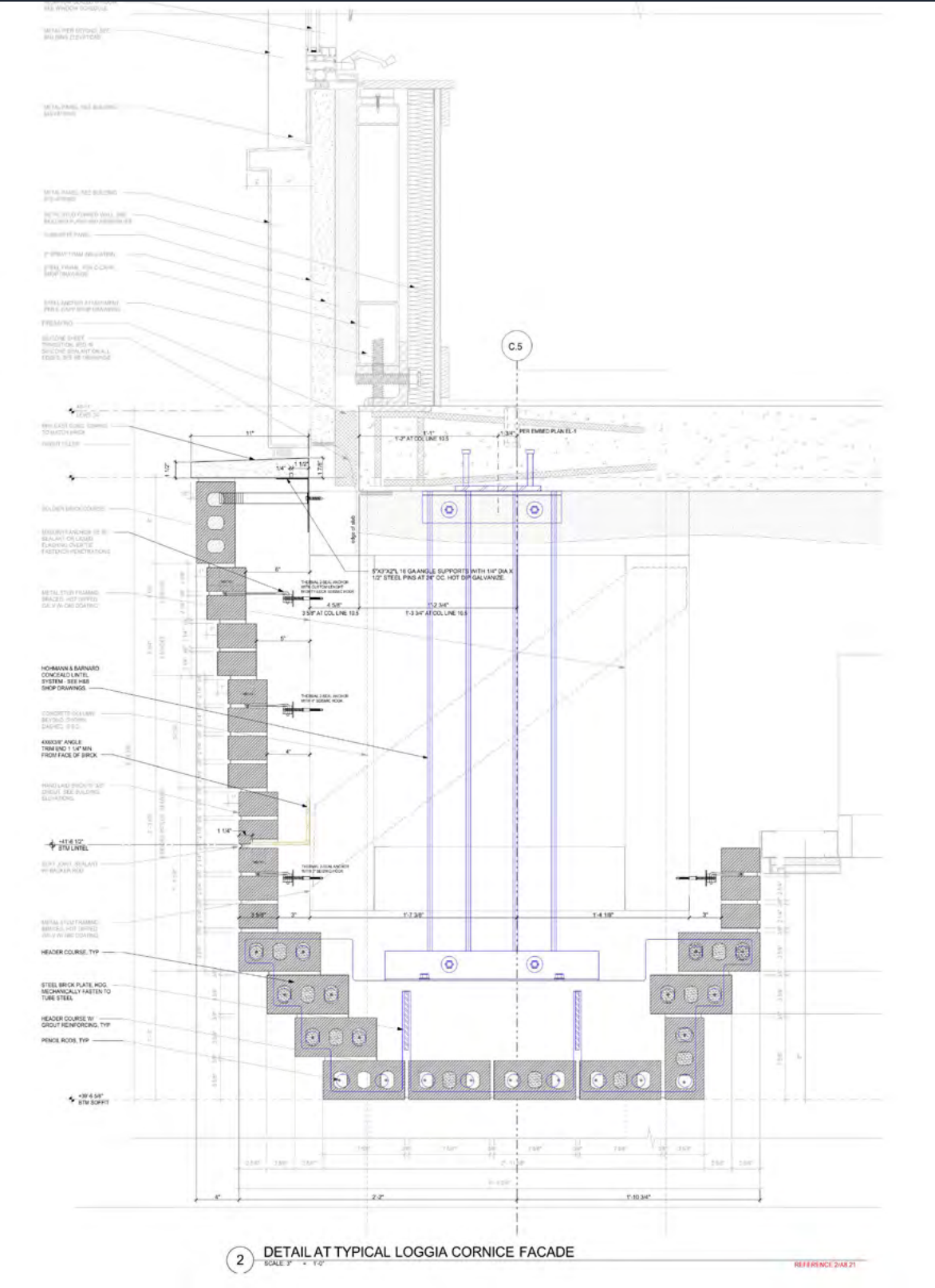
Courtyard: Design Process



Courtyard: Design Process



Courtyard Construction



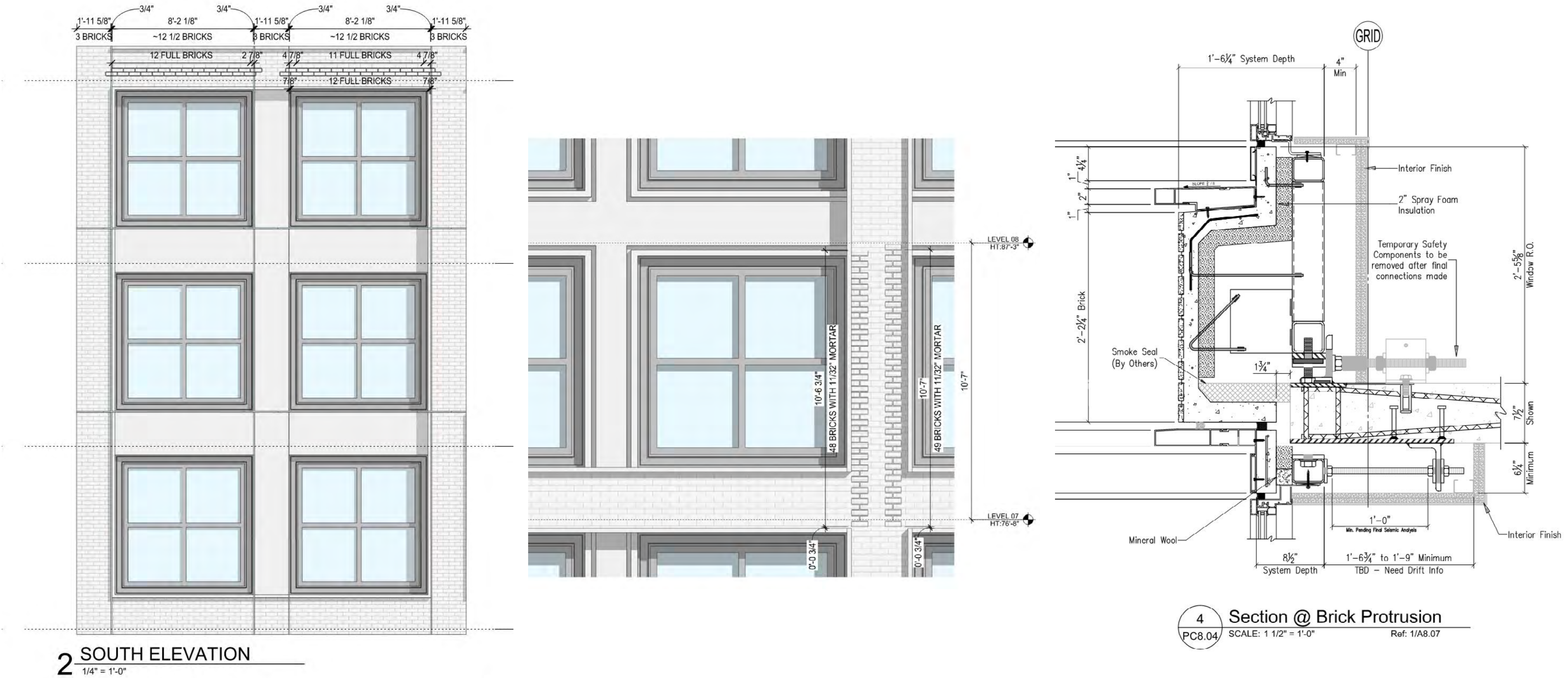
Reclaimed Brick



Reclaimed Brick: Original Structure



Panelized Thin Brick: Clark Composite Architectural Precast Panels (CCAPP)



Panelized Brick System: Construction Photos



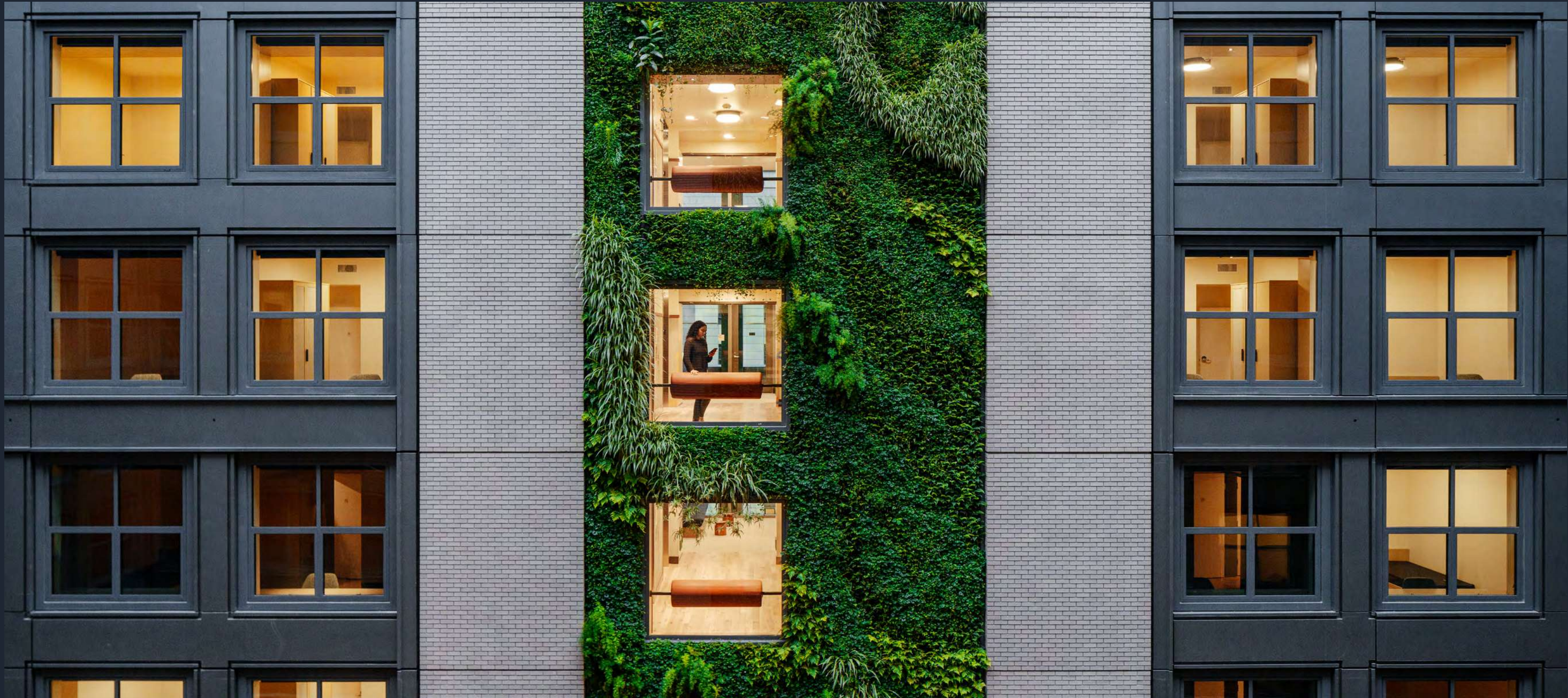
Importance of Mockups



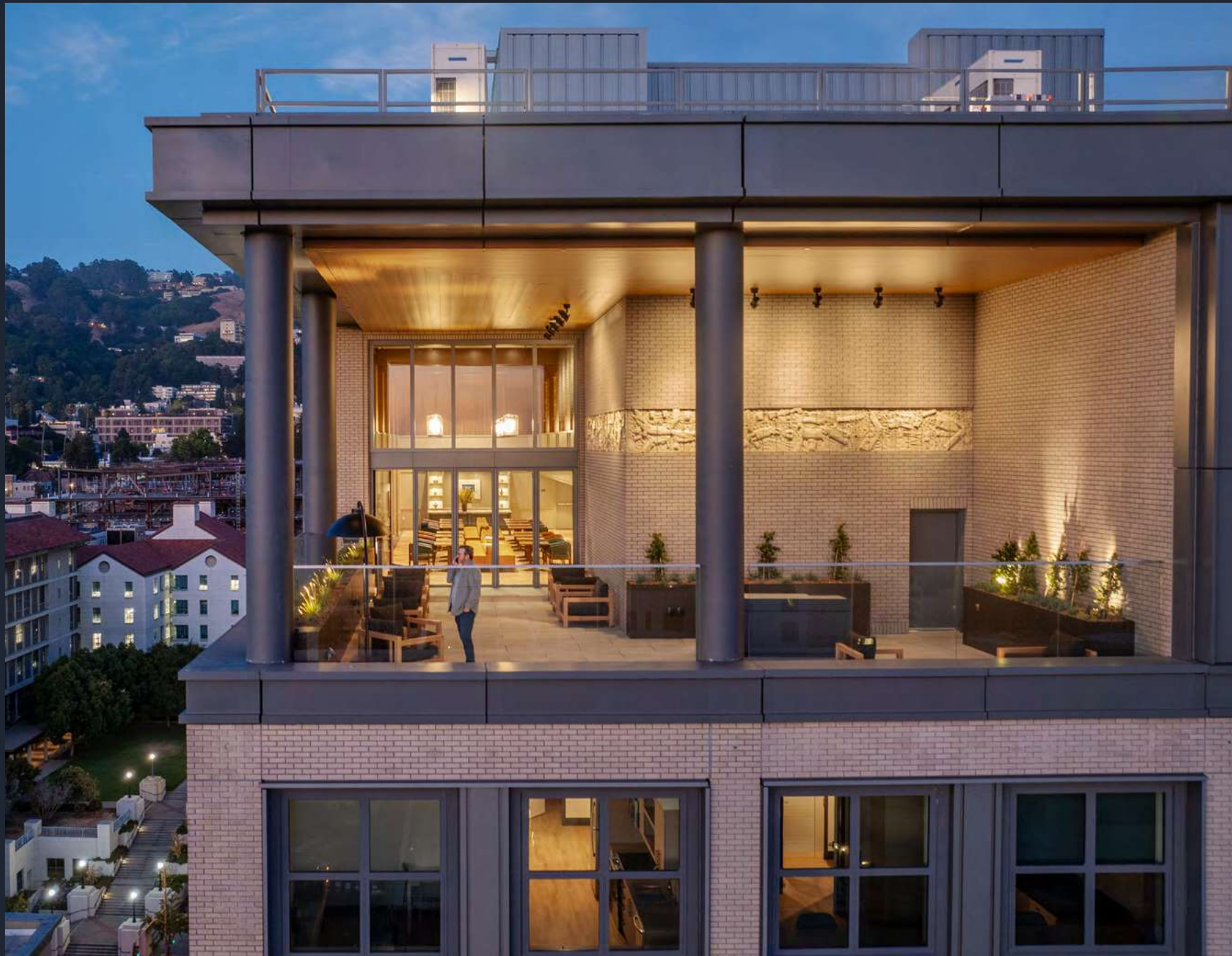
Additional Unique Applications



Additional Unique Applications



Additional Unique Applications



Thank You!

MA