


Sunnylands

Administration & Operations Campus and
Engineered Wetlands by o2 Architecture



#MasonryMatters

 Best in
Concrete Block

 Best in
Sustainability



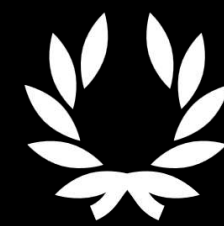
A link to architectural past, present, and future

The Administration and Operations Campus at Sunnylands; a 17-acre addition located adjacent to the existing Sunnylands Center & Gardens and the Annenberg's historic estate is composed of discrete but interconnected areas: 2-acre Operations Yard for estate management; 4-acre Administration Campus with Office and Archive Buildings, intimate outdoor spaces for outdoor gatherings and unique Engineered Wetland; an ecological waste water treatment system supporting Sunnylands' goal to operate as a sustainable living laboratory.

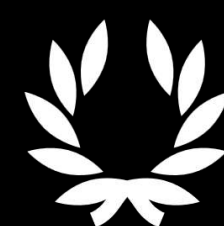




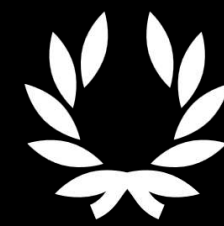
Award Winning Architecture



CMC Masonry Architecture Design Awards 2025, by California Masonry Council. Two awards: “**Best in Concrete Block**,” and “**Best in Sustainability**”.




AIA Inland Chapter: Design Awards 2020
02 Architecture received two design awards: '**Honor Award**' and '**Jury Honorable Mention**' .




CMACN: CMU Profiles in Architecture 2019
Grand Award for Public / Civic Design by the Concrete Masonry Association of California and Nevada.

**CALIFORNIA
MASONRY
DESIGN AWARDS**

 **Best in
Concrete Block**

 **Best in
Sustainability**



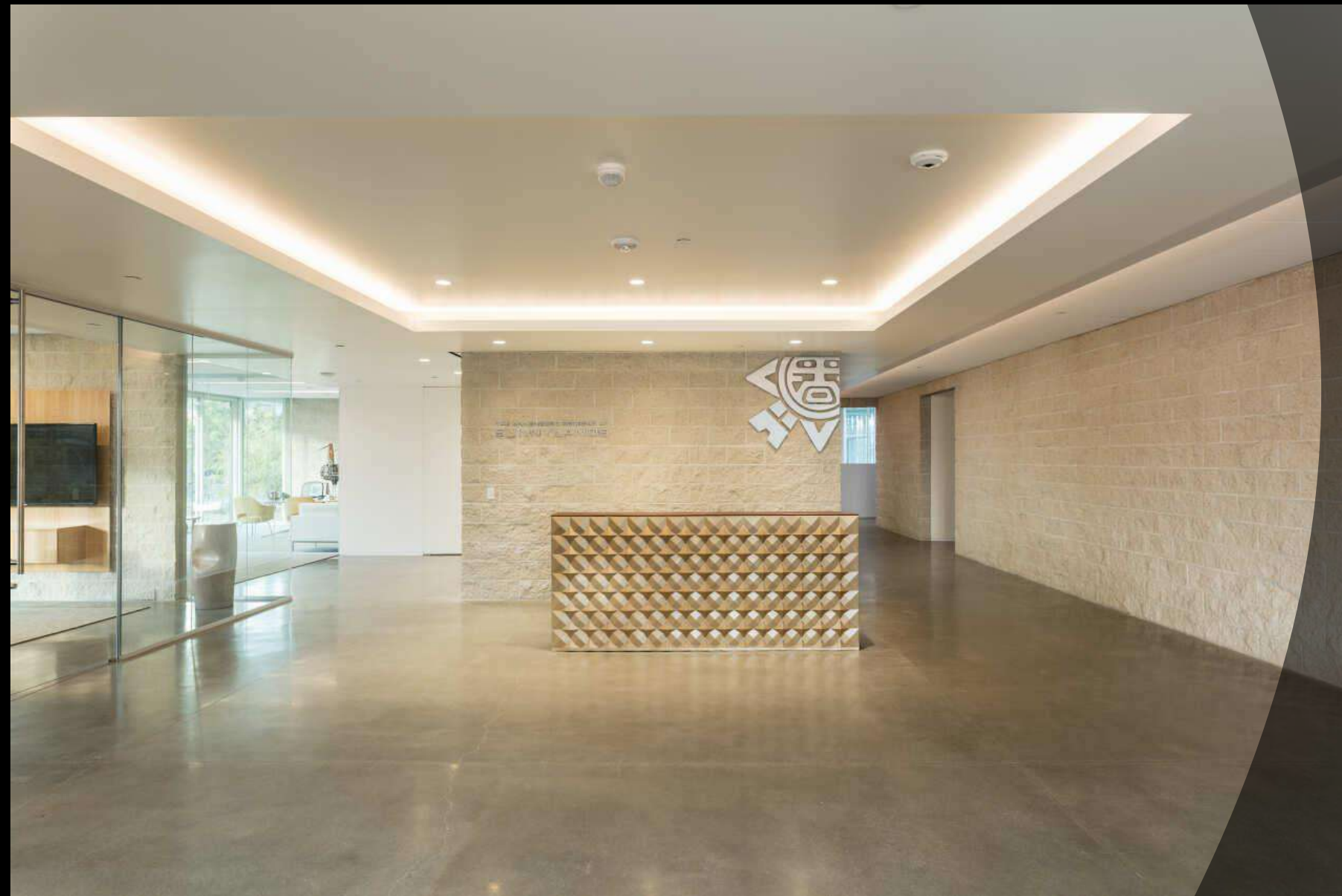
The 872 SF Engineered Wetland Building is a living laboratory and treatment system that converts black wastewater into grey water, usable for flushing toilets and irrigation.



Every effort was made to eliminate the unnecessary use of potable water for landscape purposes and to maximize water reuse. Groundwater recharge was maximized through the conveyance of water via overland flow across planting areas and by using pervious paving. Storm water retention was dispersed along the entry drive as a comprehensively considered design element.

The buildings optimize solar orientation taking advantage of CMU's thermal mass and minimizing east/west glazing and accompanying heat gain.

This combination of glazing strategies allows for optimum daylight harvesting with minimal need for daytime electric lighting. Additionally, indoor air quality is optimized through innovative roof ventilator units and low energy cooling solutions.

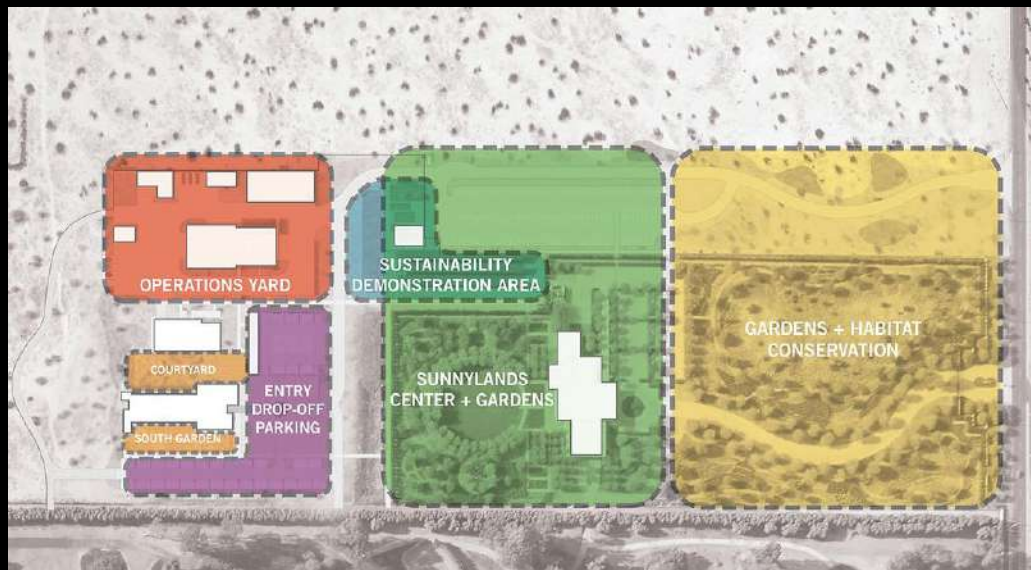


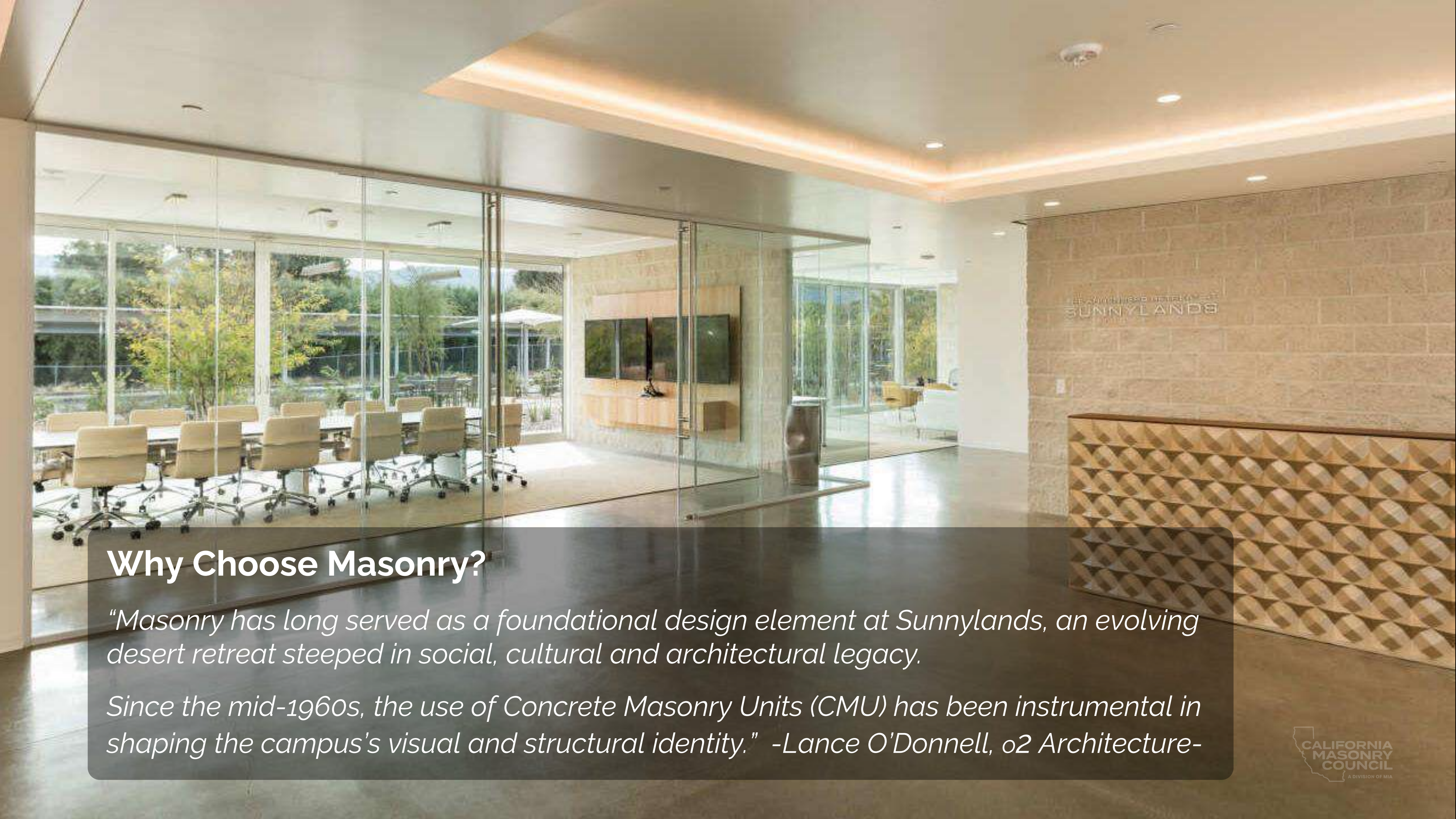
Sustainability & Energy Efficiency

Sunnylands Administration and Operations Campus was granted **LEED Platinum** certification.

The project's Energy Efficiency goal was to minimize operational energy and water use through enhanced engineering and passive design; to achieve **Net Zero** operational energy and reduce embodied energy to an achievable minimum.

Concrete Block's “**thermal mass**” contributes by holding the cool inside, minimizing the need to run the air conditioning system during the day, and moderating the building's environmental impact.



A modern office interior featuring large glass walls and doors. On the left, a conference room is visible with several yellow chairs around a table. The right side shows a reception area with a wall made of light-colored concrete masonry units (CMU) and a wooden reception desk with a geometric pattern. The ceiling has recessed lighting.

Why Choose Masonry?

"Masonry has long served as a foundational design element at Sunnylands, an evolving desert retreat steeped in social, cultural and architectural legacy.

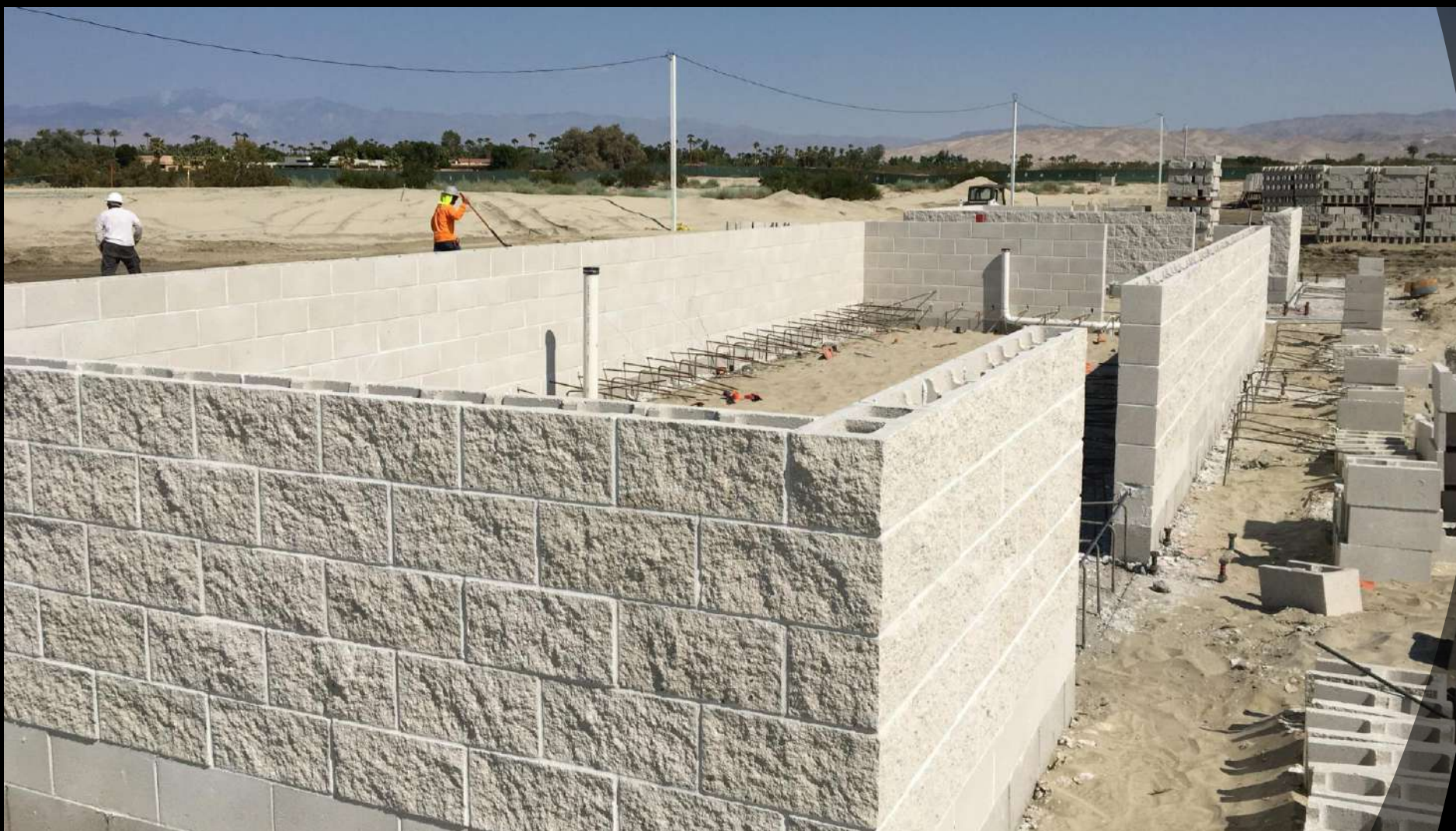
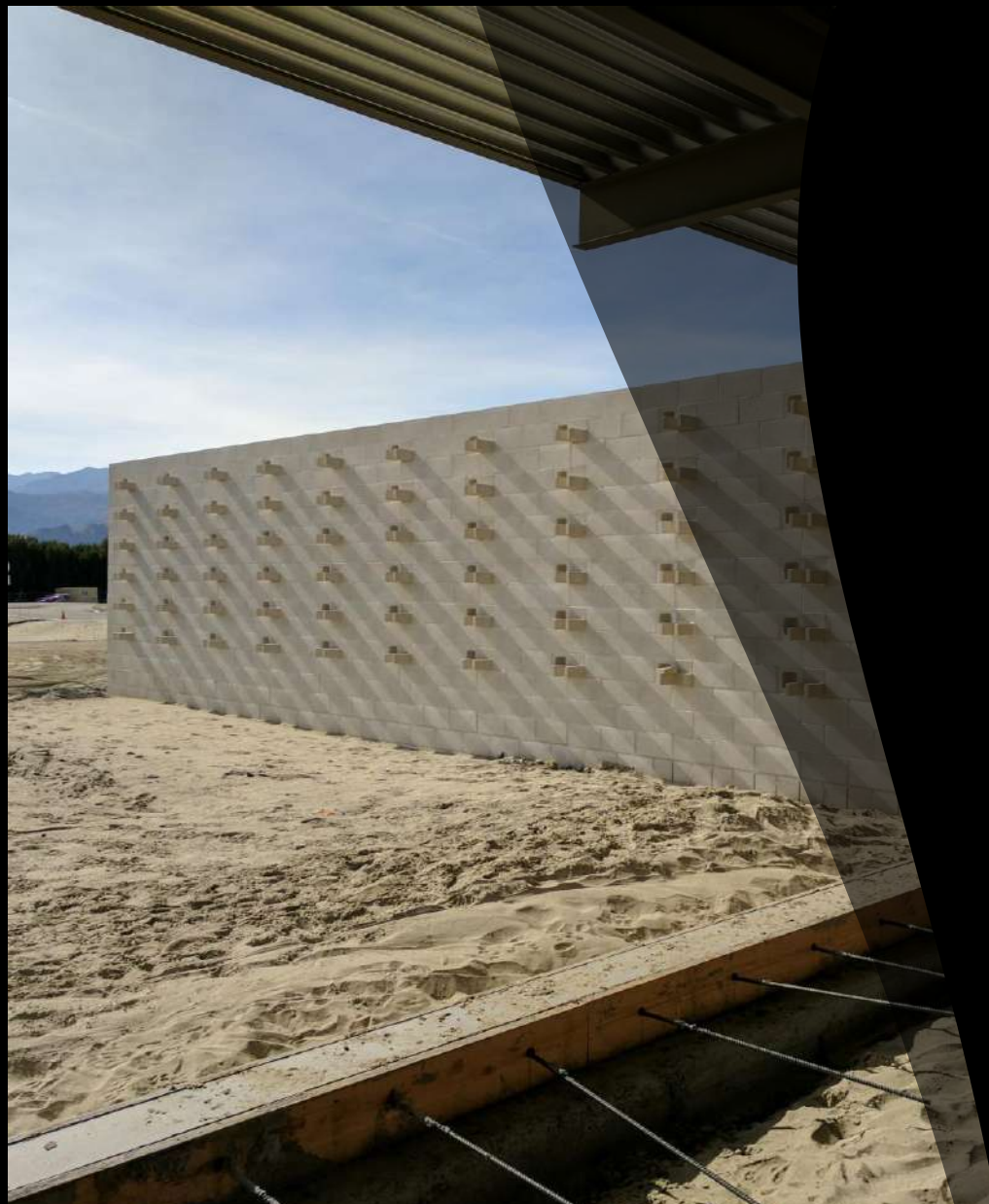
Since the mid-1960s, the use of Concrete Masonry Units (CMU) has been instrumental in shaping the campus's visual and structural identity." -Lance O'Donnell, o2 Architecture-

Why Choose Masonry?

"CMU's aesthetic compatibility with the landscape played a vital role in safeguarding the Estate's character—its neutral tones and timeless textures allowing new additions to integrate seamlessly with existing structures. In the unforgiving desert climate, where extreme heat and high winds test the integrity of every material choice, CMU stands out as both resilient and energy conscious. Its thermal mass properties offer natural regulation against temperature fluctuations, supporting long-term sustainability goals without compromising design integrity."

"Through CMU, Sunnylands continues to embrace a cohesive, durable, and contextually aware architectural language—one that honors its storied past while adapting confidently to the future."

Lance O'Donnell, o2 Architecture.





"The buildings are aesthetically compatible with the existing modernist context and timeless materials, lending consistency across the Annenberg Estate. The campus exploits clean modern forms utilizing concrete masonry units, steel, plaster, and well-shaded glazing."



Credits:

Design Architect:
o2 Architecture

Structural Engineer:
Saiful Bouquet Structural
Engineers

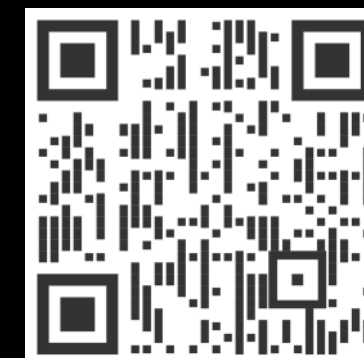
Landscape:
CMG Landscape Architecture

General Contractor:
Matt Construction Corporation

Material Producer:
Angelus Block Co.

Masonry Contractor:
Pro Structural Inc.

Subscribe to our Newsletter



California Masonry Council (CMC)'s mission is to be a catalyst, advocate, and the best masonry resource in California.

Our organization promotes masonry as an essential design and building material while uniting our trade with the AEC community (architecture, engineering, and construction).

CMC is a non-profit organization.



#MasonryMatters